

# 53rd and 132nd DRAINAGE

## SHEET INDEX

- 1 COVER
- 2 EROSION CONTROL
- 3 PLAN AND PROFILE
- 4 PLAN AND PROFILE
- 5 NOTES AND DETAILS

## CITY OFFICIALS

- DARYL EIDINGER

MARK CRELEY

RYAN DAY

TYRON CHRISTOPHERSON

ROSANNE TOMYN

JOHN WEST

COLLEEN WISE

NATE LOWRY
- MAYOR

DEPUTY MAYOR

COUNCIL POSITION #2

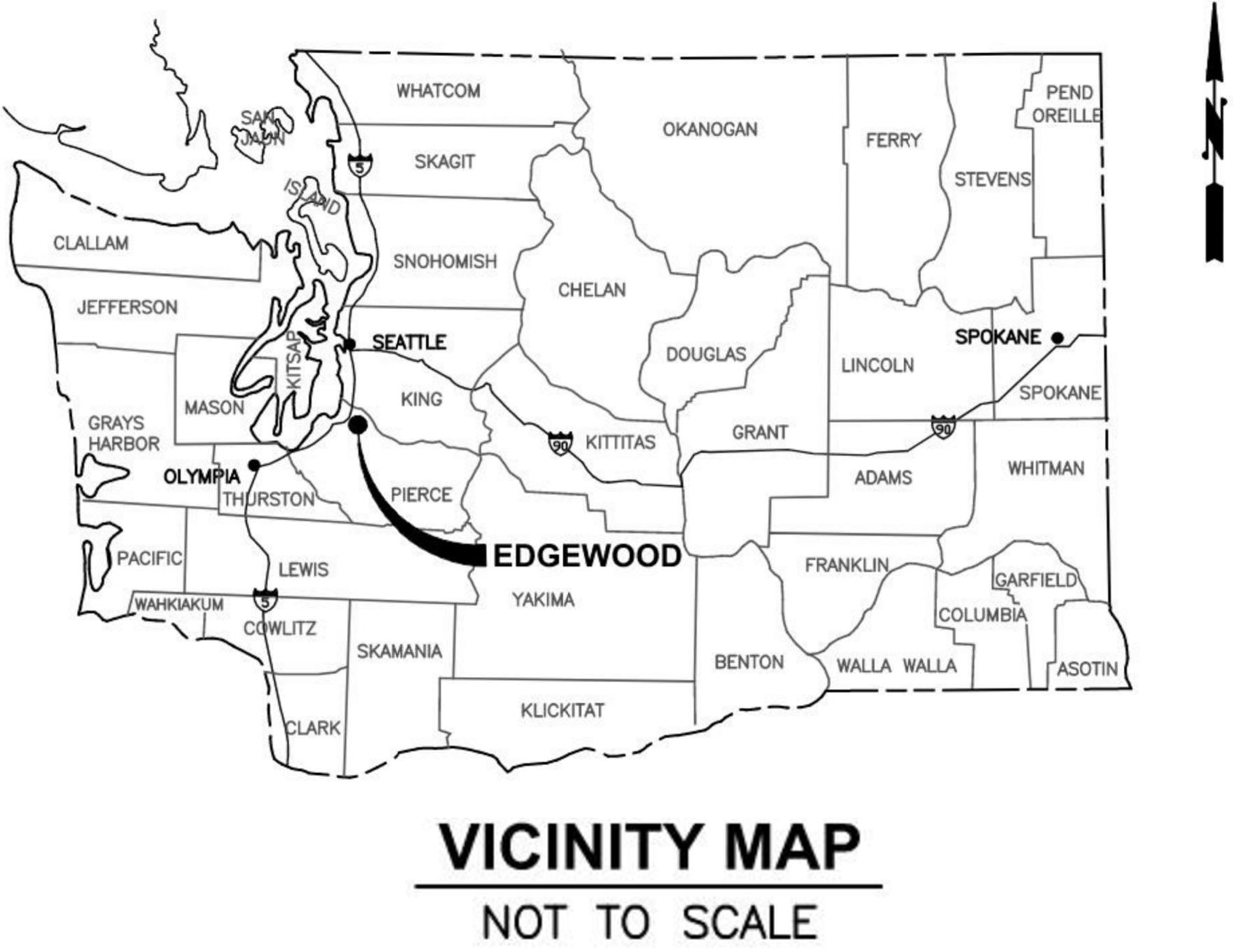
COUNCIL POSITION #3

COUNCIL POSITION #4

COUNCIL POSITION #5

COUNCIL POSITION #6

COUNCIL POSITION #7



**GENERAL NOTE:**  
EXISTING UTILITY INFORMATION TAKEN FROM FIELD SURVEY PREPARED BY GRAY & OSBORNE, AS-BUILT DRAWINGS, AND UTILITY LOCATES IN THE FIELD. IT IS THE CONTRACTORS RESPONSIBILITY TO VERIFY ALL UTILITIES PRIOR TO CONSTRUCTION.

ALL CONSTRUCTION TO CONFORM TO WSDOT STANDARD SPECIFICATIONS 2021 AND PIERCE COUNTY STANDARD DETAILS.

PLANS PREPARED BY:

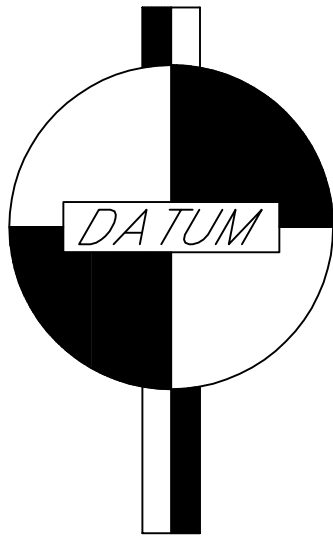


SURVEY PREPARED BY:



## NOTES

- HORIZONTAL DATUM: NAD 83/11 WSPC SOUTH ZONE.
- VERTICAL DATUM: NAVD 88
- THIS SURVEY WAS PERFORMED USING LEICA GS16 RTK GPS ON THE WA. STATE REFERENCE NETWORK, NAD83-2011 (EPOCH 2010.00) TO ESTABLISH BASIS OF BEARING OF GRID NORTH, WA. COORDINATE SYSTEM, SOUTH ZONE, ALONG SET G&O CONTROL POINT NO'S 9 AND 10, AS SHOWN HEREON. ALL OTHER SURVEY WAS PERFORMED USING A LEICA TCRA 1201+ 1 SECOND TOTAL STATION, USING TRAVERSE AND RADIAL SURVEY METHODS. ALL DISTANCES ARE GROUND DISTANCES (AVG. CGF=0.99996327077). SURVEY MEETS AND/OR EXCEEDS ACCURACY REQUIREMENTS CONTAINED IN WAC 332-130-090.
- TOPOGRAPHIC SURVEY PERFORMED ON 9/29/2020 AND REFLECT THE GENERAL CONDITIONS ON THE GROUND AT THAT TIME.
- THIS SURVEY DOES NOT PURPORT TO SHOW ALL EASEMENTS OF RECORD OR OTHERWISE.
- RIGHT-OF-WAY AND CENTERLINES HAVE BEEN DETERMINED BY HOLDING FOUND PLAT MONUMENTS AS NOTED.
- THE PROPERTY LINES SHOWN HERE ON ARE BASED ON AVAILABLE INFORMATION, NOT ON A SURVEYED LOCATION AND ARE ONLY APPROXIMATE.



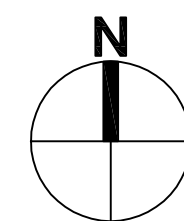
CITY OF EDGEWOOD 2224 104th AVENUE EAST EDGEWOOD, WA 98372	
PROJECT NO.	PWSD 21-100
SHEET	1 OF 5




## 53rd and 132nd DRAINAGE

LARRIGAN DREW Z  
5311 EDGEWOOD DR E

(0420231029



SCALE: 1" = 20'



A graphic scale bar with alternating black and white segments. It is marked with 0', 20', and 40'.

### EROSION/SEDIMENTATION CONTROL NOTES

1. CONTRACTOR SHALL SUBMIT TEMPORARY WATER POLLUTION/EROSION CONTROL PLAN PER THE CONTRACT SPECIFICATIONS. THESE TESC PLANS ARE NOT INTENDED TO BE COMPLETE. THE CONTRACTOR SHALL PROTECT JOVITA CREEK AND THE STREAMS ABUTTING THE PROJECT.

2. ALL LIMITS OF CLEARING AND AREAS OF VEGETATION PRESERVATION SHALL BE OBSERVED DURING CONSTRUCTION.

3. ALL REQUIRED SEDIMENTATION/EROSION CONTROL FACILITIES MUST BE IN OPERATION PRIOR TO LAND CLEARING AND/OR OTHER CONSTRUCTION TO ENSURE THAT SEDIMENT LADEN WATER DOES NOT ENTER THE NATURAL DRAINAGE SYSTEM. ALL EROSION AND SEDIMENT FACILITIES SHALL BE MAINTAINED IN A SATISFACTORY CONDITION UNTIL SUCH TIME THAT CLEARING AND /OR CONSTRUCTION IS COMPLETED AND THE POTENTIAL FOR ON-SITE EROSION HAS PASSED. THE IMPLEMENTATION, MAINTENANCE, REPLACEMENT AND ADDITIONS TO EROSION/SEDIMENTATION CONTROL SYSTEMS SHALL BE THE RESPONSIBILITY OF THE CONTRACTOR.

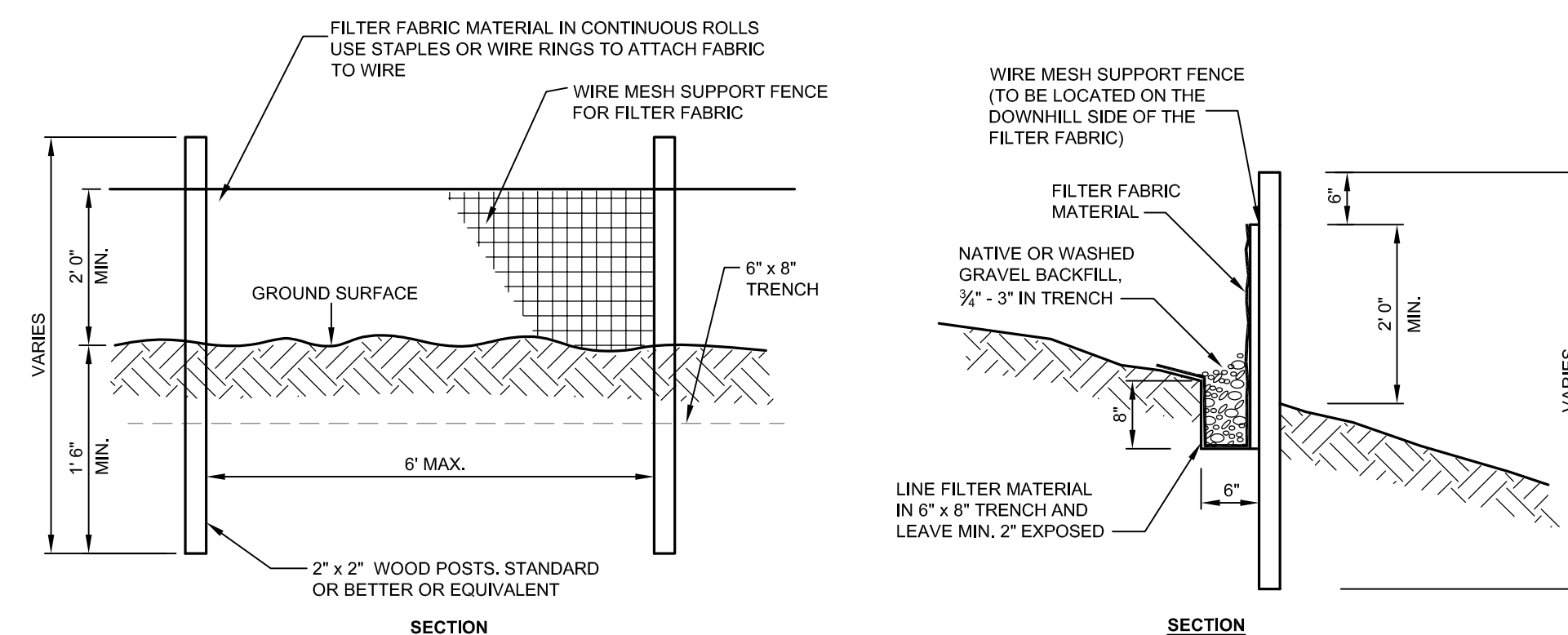
4. THE EROSION AND SEDIMENTATION CONTROL SYSTEMS DEPICTED ON THIS DRAWING ARE INTENDED TO BE MINIMUM REQUIREMENTS TO MEET ANTICIPATED SITE CONDITIONS. AS CONSTRUCTION PROGRESSES AND AS UNEXPECTED OR SEASONAL CONDITIONS DICTATE, THE CONTRACTOR SHOULD ANTICIPATE THAT MORE EROSION AND SEDIMENTATION CONTROL FACILITIES WILL BE NECESSARY TO ENSURE COMPLETE STABILIZATION OF THE PROPOSED SITE. DURING THE COURSE OF CONSTRUCTION, IT SHALL BE THE OBLIGATION AND RESPONSIBILITY OF THE CONTRACTOR TO ADDRESS ANY NEW CONDITIONS THAT MAY ARISE FROM HIS ACTIVITIES. IT MAY BE NECESSARY TO PROVIDE ADDITIONAL FACILITIES, OVER AND ABOVE THE MINIMUM REQUIREMENTS, AS MAY BE NEEDED TO PROTECT ADJACENT PROPERTIES AND THE WATER QUALITY OF THE RECEIVING DRAINAGE SYSTEM.

5. AT NO TIME SHALL MORE THAN ONE FOOT OF SEDIMENT BE ALLOWED TO ACCUMULATE WITHIN A CATCH BASIN. THE CONTRACTOR SHALL BE RESPONSIBLE FOR REMOVING AND DISPOSING OF THE SEDIMENT. ALL CATCH BASINS, CONVEYANCE LINES AND DITCHES SHALL BE CLEANED PRIOR TO PAVING.

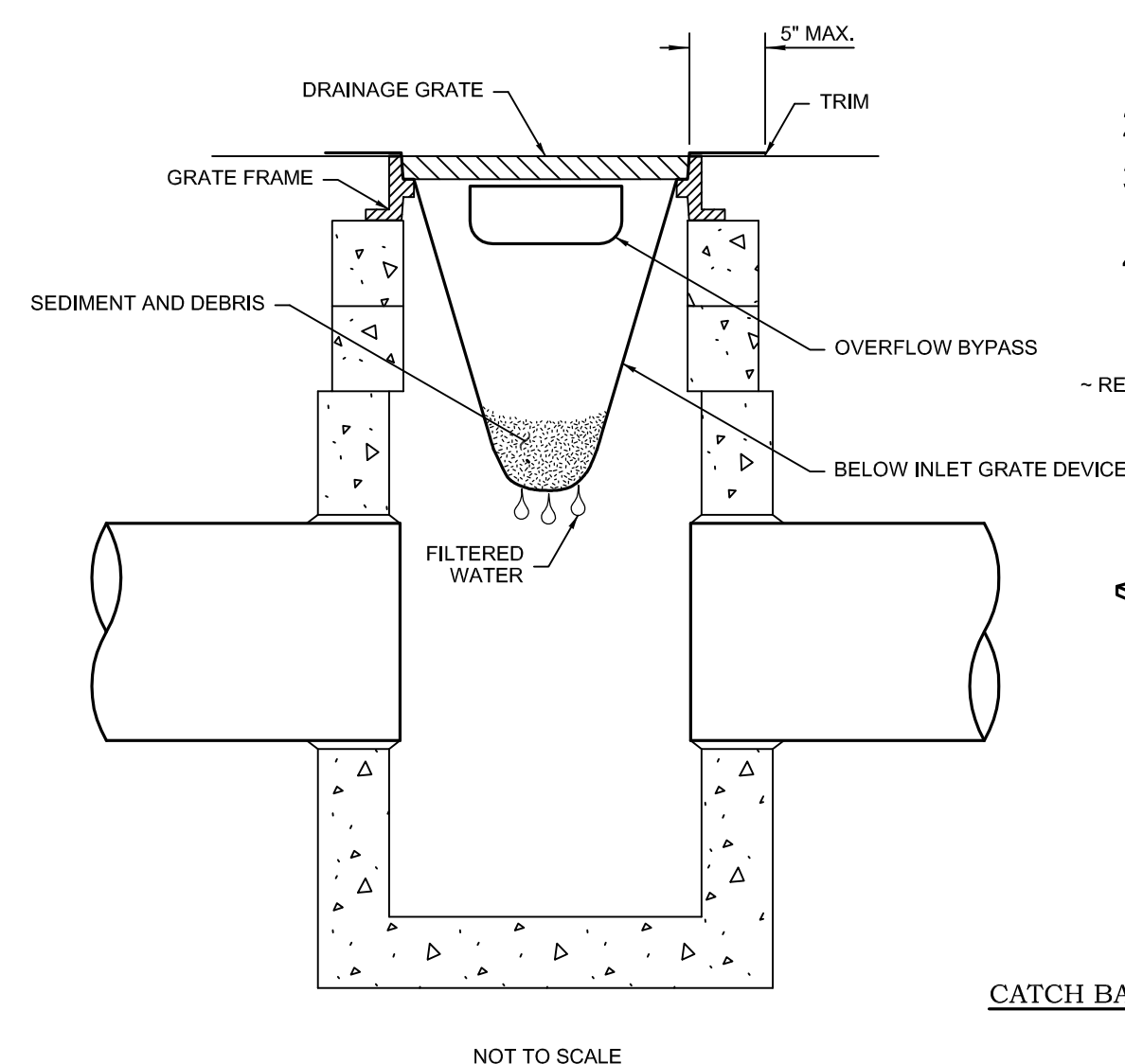
6. THE CONTRACTOR SHALL REMOVE MATERIAL DROPPED, WASHED OR TRACKED FROM VEHICLES ONTO THE TOWN RIGHT-OF-WAY OR INTO THE EXISTING STORM DRAINAGE SYSTEM. DEBRIS SHALL NOT BE WASHED INTO THE STORM DRAINAGE SYSTEM.

7. TEMPORARY EROSION CONTROL FACILITIES SHALL BE INSPECTED WEEKLY AND MAINTAINED WITHIN 24 HOURS FOLLOWING A STORM EVENT. SEDIMENT SHALL BE REMOVED TO INSURE THE FACILITIES WILL FUNCTION PROPERLY. THE FACILITIES SHALL BE SATISFACTORILY MAINTAINED UNTIL CONSTRUCTION IS COMPLETED AND THE POTENTIAL FOR ON-SITE EROSION HAS PASSED. ALL STORM DRAIN INLETS MADE OPERABLE DURING CONSTRUCTION SHALL BE PROTECTED SO THAT

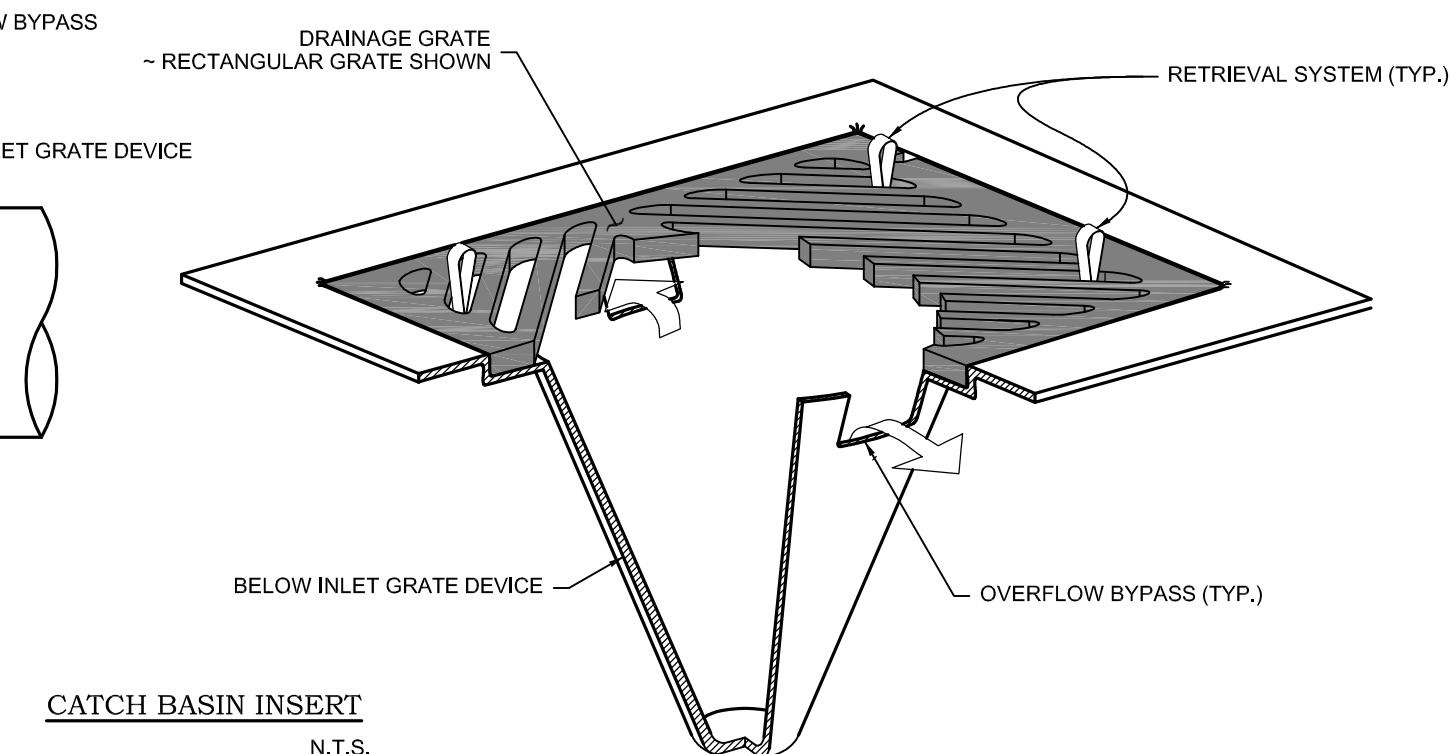
8. STORMWATER RUNOFF SHALL NOT ENTER THE CONVEYANCE SYSTEM WITHOUT FIRST BEING FILTERED OR OTHERWISE TREATED TO REMOVE SEDIMENT.



FILTER FABRIC FENCE DETAIL



1. Size the Below Inlet Grate Device (BIGD) for the storm water structure it will service.
2. The BIGD shall have a built-in high-flow relief system (overflow bypass).
3. The retrieval system must allow removal of the BIGD without spilling the collected material.
4. Perform maintenance in accordance with Standard Specification 8-01.3(15).



8/26/2021

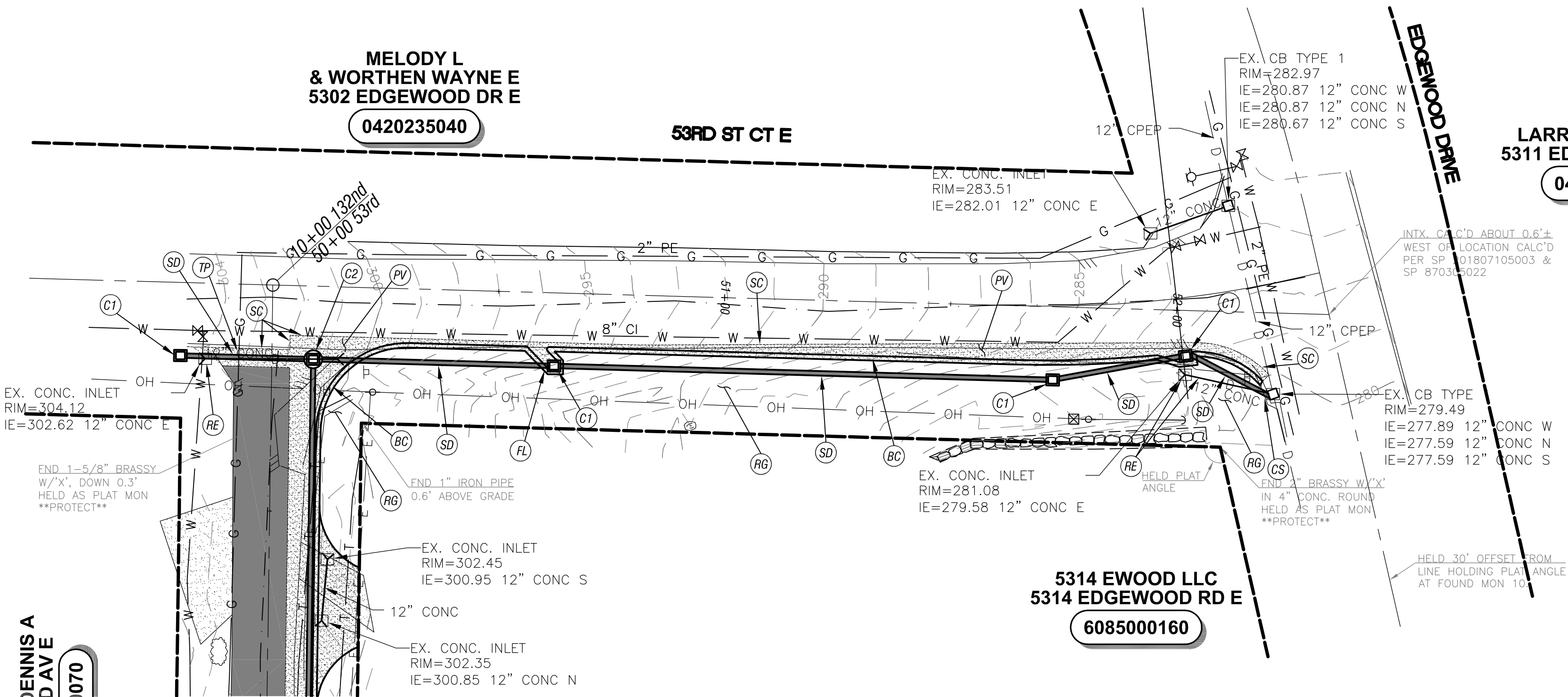
CITY OF EDGEWOOD  
2224 104th AVENUE EAST  
EDGEWOOD, WA 98372

PROJECT NO.	PWSD 21-100
-------------	-------------

SHEET	2 OF 5
-------	--------

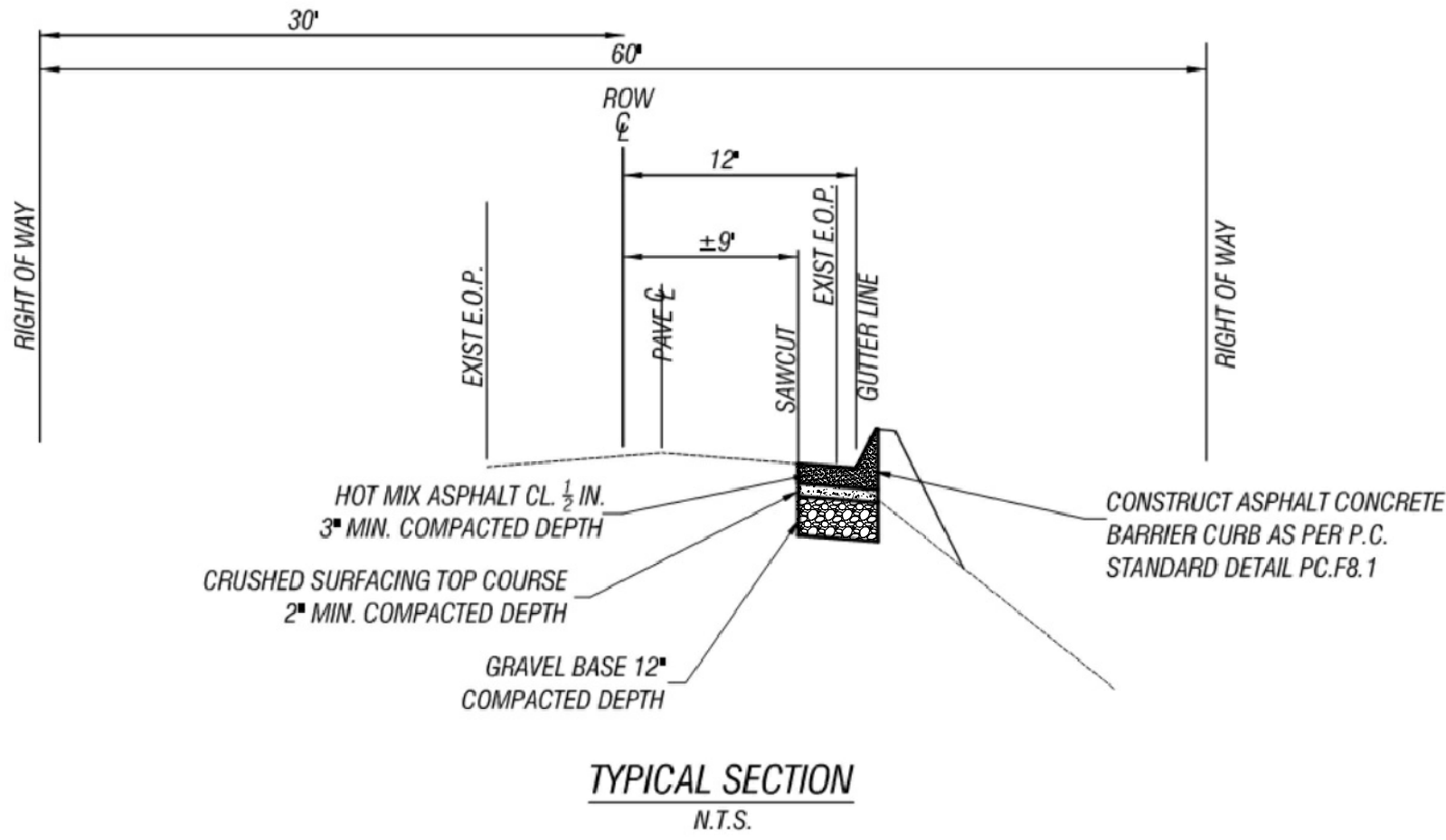
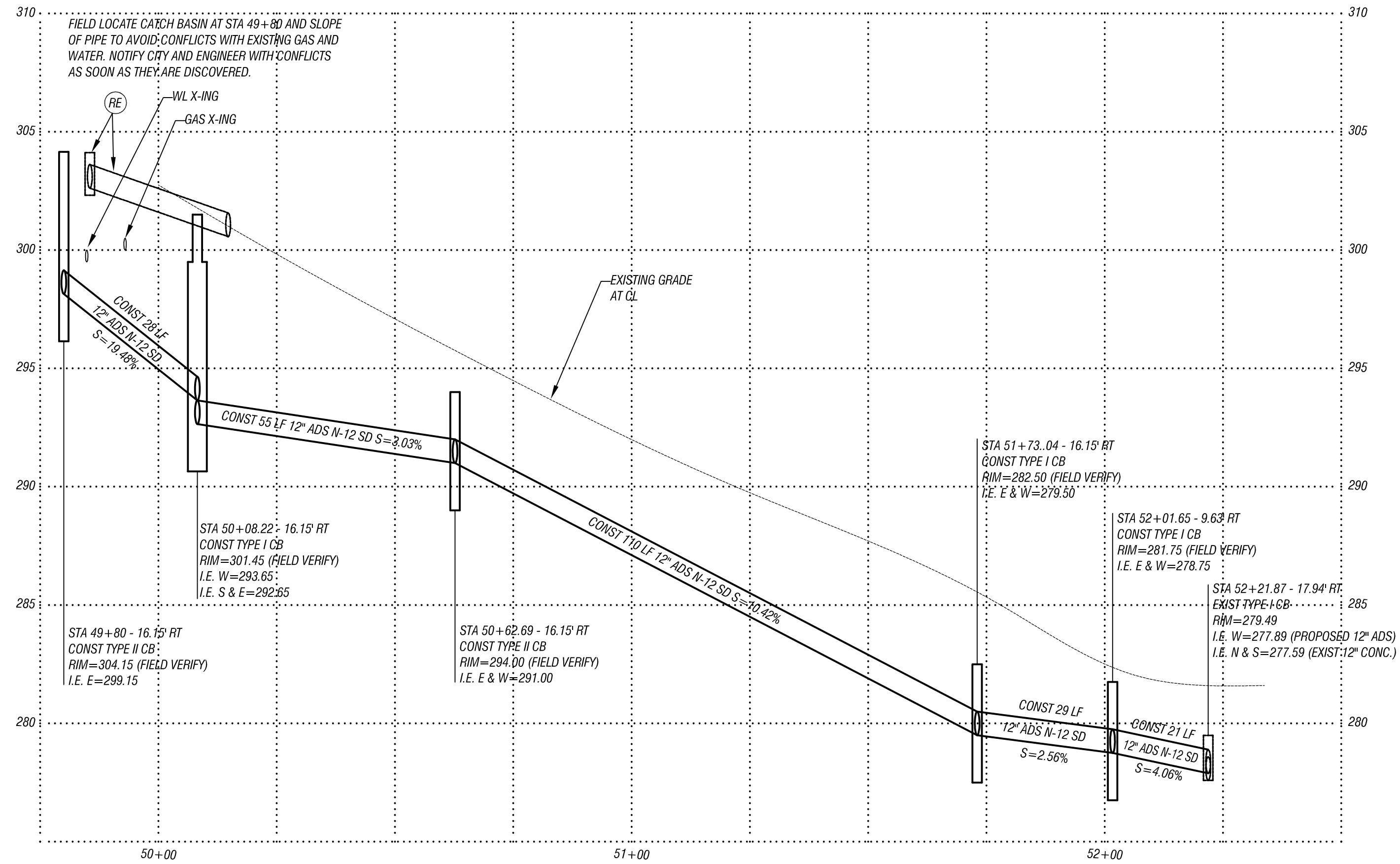
NOTE: CALL 1-800-424-5555 BEFORE YOU DIG

53rd and 132nd DRAINAGE



PETERSON DENNIS A  
5316 132ND AV E  
6085000070

- (SD) CONSTRUCT 12" ADS N-12 STORM DRAIN AT GRADE SHOWN IN PROFILE. MEASUREMENT: LF OF 12" STORM. BID ITEM: INCLUDES ALL EXCAVATION, PIPE, MANPOWER, EQUIPMENT, TOOLS, TRENCH BACKFILL TO PERFORM THE WORK. PAYMENT: PER LF.
- (C1) CONSTRUCT TYPE I CATCH BASIN AT GRADES AND LOCATION SHOWN IN PROFILE. MEASUREMENT: EACH TYPE I CONSTRUCTED. BID ITEM: INCLUDES ALL EXCAVATION, MATERIALS, MANPOWER, EQUIPMENT, TOOLS, BACKFILL, RISERS, GROUT, UDS, GRATES, TO PERFORM THE WORK AND BRING TO FINISHED GRADE. PAYMENT: PER EA.
- (C2) CONSTRUCT TYPE II CATCH BASIN AT GRADES AND LOCATION SHOWN IN PROFILE. MEASUREMENT: EACH TYPE II CONSTRUCTED. BID ITEM: INCLUDES ALL EXCAVATION, MATERIALS, MANPOWER, EQUIPMENT, TOOLS, BACKFILL, RISERS, GROUT, COVERS, TO PERFORM THE WORK AND BRING TO FINISHED GRADE. PAYMENT: PER EA.
- (SC) SAWCUT EXISTING PAVEMENT TO CREATE A CLEAN EDGE FOR PAVING. MEASUREMENT: LF OF SAWCUTTING COMPLETED. BID ITEM: INCLUDES ALL MANPOWER, EQUIPMENT, TOOLS, TO PERFORM THE WORK. PAYMENT: PER LF.
- (PV) PAVE AS SHOWN IN TYPICAL SECTION AND ON PLANS. MEASUREMENT: PER TON OF AC. BID ITEM: INCLUDES ALL ASPHALT, MANPOWER, EQUIPMENT, TOOLS, TESTING, COMPACTION EQUIPMENT TO PERFORM THE WORK. PAYMENT: PER TON OF AC.
- (BC) CONSTRUCT AC BARRIER CURB OR AC RAISED EDGE AS SHOWN IN DETAIL. MEASUREMENT PER LF OF CURB. BID ITEM: INCLUDES ALL ASPHALT, MANPOWER, EQUIPMENT, TOOLS, TO PERFORM THE WORK. PAYMENT: PER LF OF AC BARRIER OR RAISED EDGE CURB.
- (DW) CONSTRUCT DRIVEWAY APPROACH AS PER STANDARD DETAIL. MEASUREMENT: PER EACH DRIVEWAY APPROACH CONSTRUCTED. BID ITEM: INCLUDES ALL ASPHALT, MANPOWER, EQUIPMENT, TOOLS NEEDED TO PERFORM THE WORK. PAYMENT: PER EACH DRIVEWAY APPROACH CONSTRUCTED.
- (FL) CONSTRUCT ASPHALT FLUME FOR CATCH BASIN BIP OUT, TO CONTROL DRAINAGE ON STEEP GRADE. MEASUREMENT AND PAYMENT WILL BE INCIDENTAL TO TONNAGE OF ASPHALT AND LINEAL FEET OF CURB.
- (RG) RE-GRADE EXISTING DITCH OR DRESS UP EXISTING SHOULDER. MEASUREMENT: PER SQUARE YARD OF DITCH OR SHOULDER GRADED. BID ITEM: INCLUDES ALL MATERIALS, EQUIPMENT, EXCAVATION, AGGREGATE, MULCH, SEEDING, TOOLS, MANPOWER TO PERFORM THE WORK. PAYMENT: PER SQUARE YARD, MEASURED IN THE FIELD, OF DITCH OR SHOULDER RESTORATION.
- (TP) TRENCH PATCH AS AS PER STANDARD DETAIL. MEASUREMENT: INCIDENTAL TO TONNAGE OF ASPHALT.
- (RE) REMOVE AND DISPOSE OF EXISTING STORM PIPE AND/OR STRUCTURE. MEASUREMENT AND PAYMENT WILL BE INCIDENTAL TO LINEAL FEET OF STORM DRAIN.
- (CS) CONNECT TO EXISTING DRAINAGE STRUCTURE. MEASUREMENT: WILL BE PER EACH CONNECTION MADE. BID ITEM: INCLUDES ALL MATERIALS, MANPOWER, EQUIPMENT, GROUT, TOOLS TO MAKE THE CONNECTION. PAYMENT: PER EACH CONNECTION.
- (OL) 1-1/2" OVERLAY OVER EXISTING ROAD AS SHOWN. MEASUREMENT: WILL BE PER TON OF AC. BID ITEM INCLUDES: ALL MATERIALS, TESTING, MANPOWER, EQUIPMENT, TOOLS TO LAY AND COMPACT TO WSDOT SPECIFICATIONS. PERMENT: PER TON.

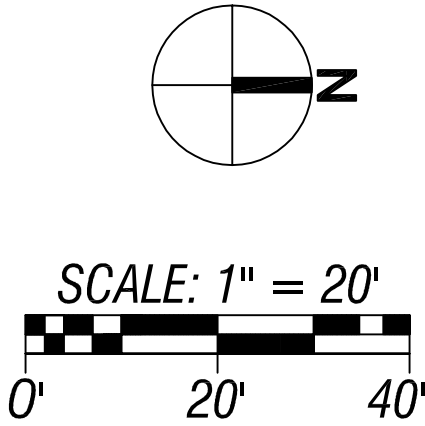
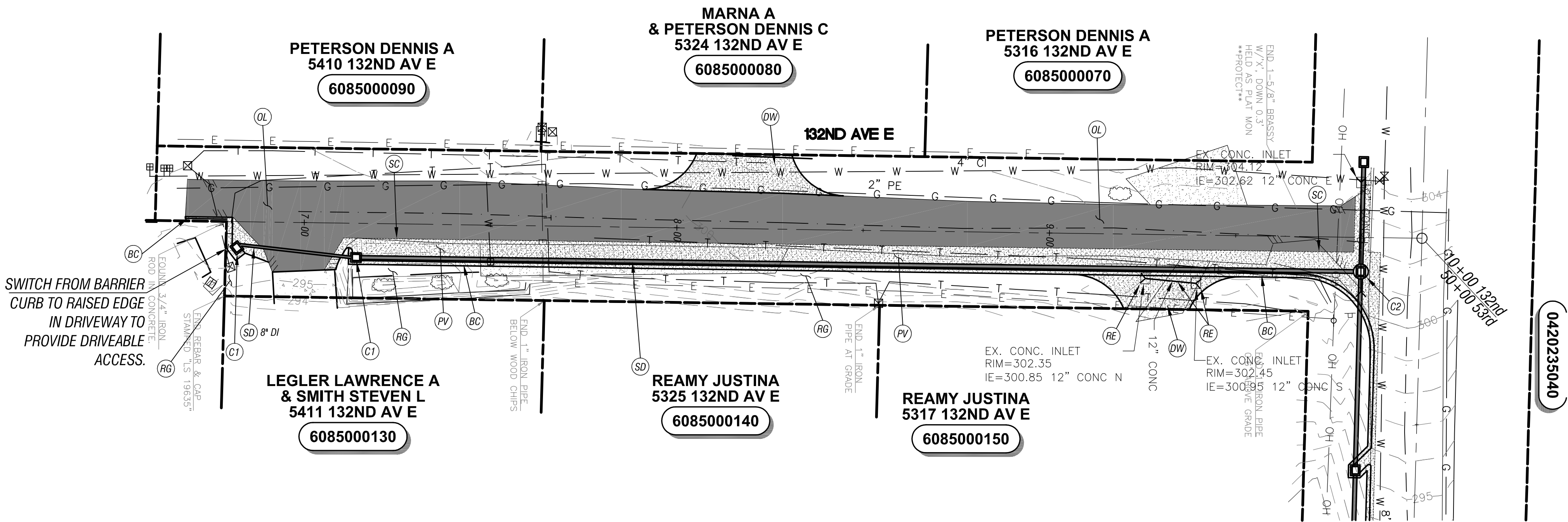


8/26/2021

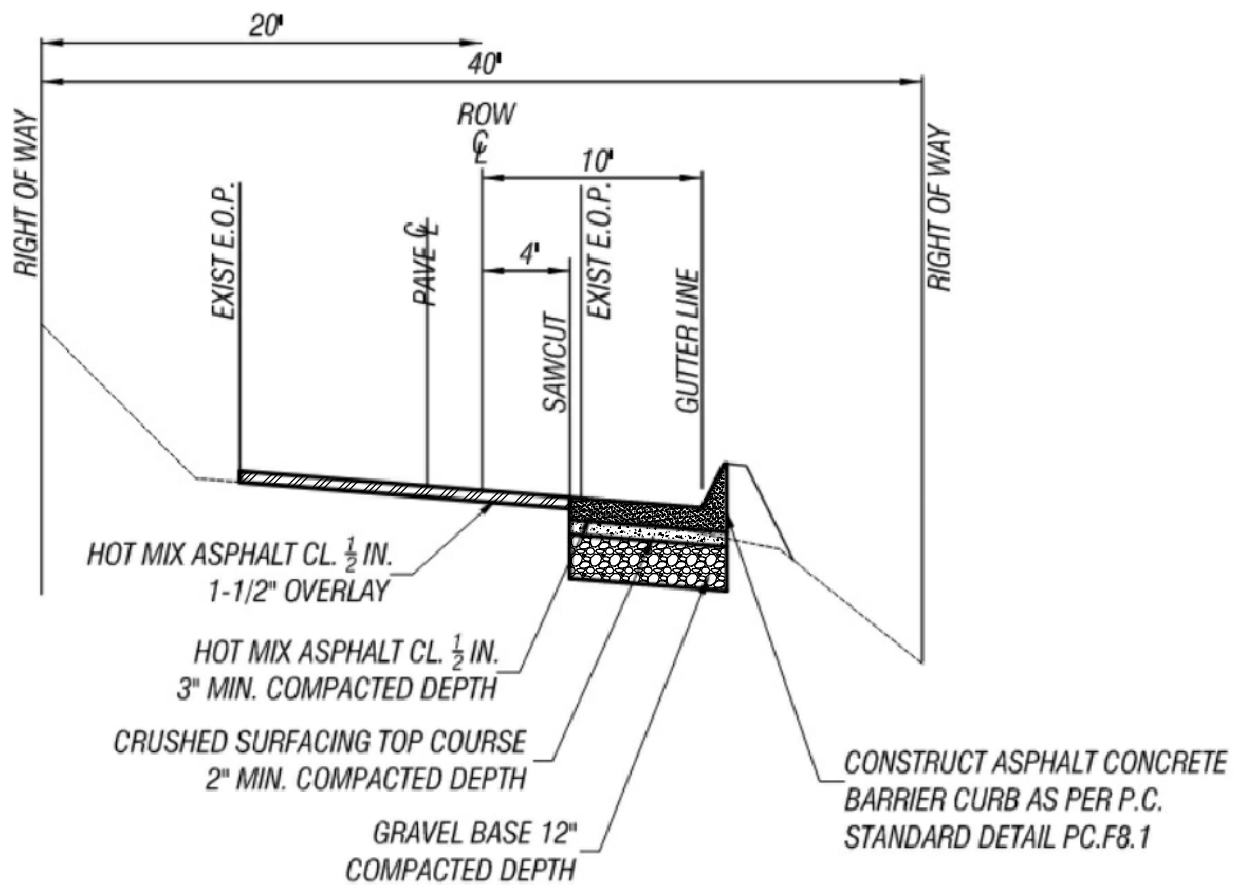
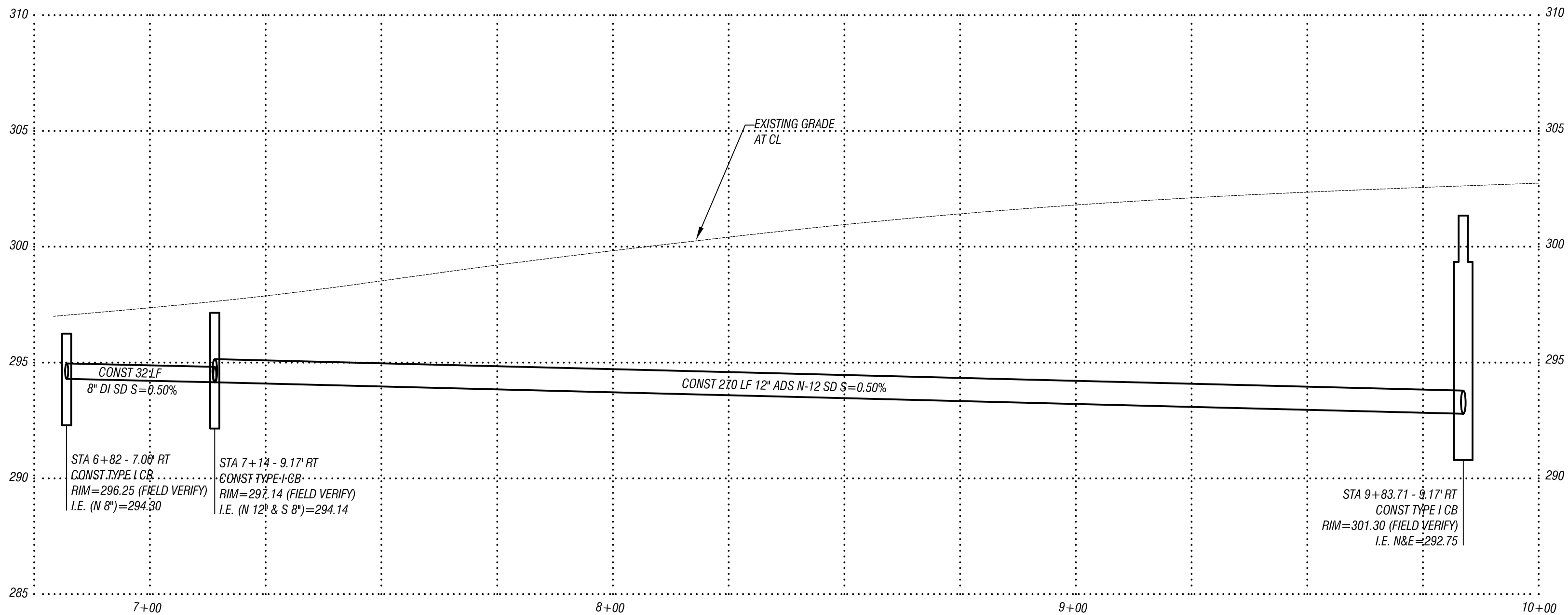
NOTE: CALL 1-800-424-5555 BEFORE YOU DIG.



53rd and 132nd DRAINAGE



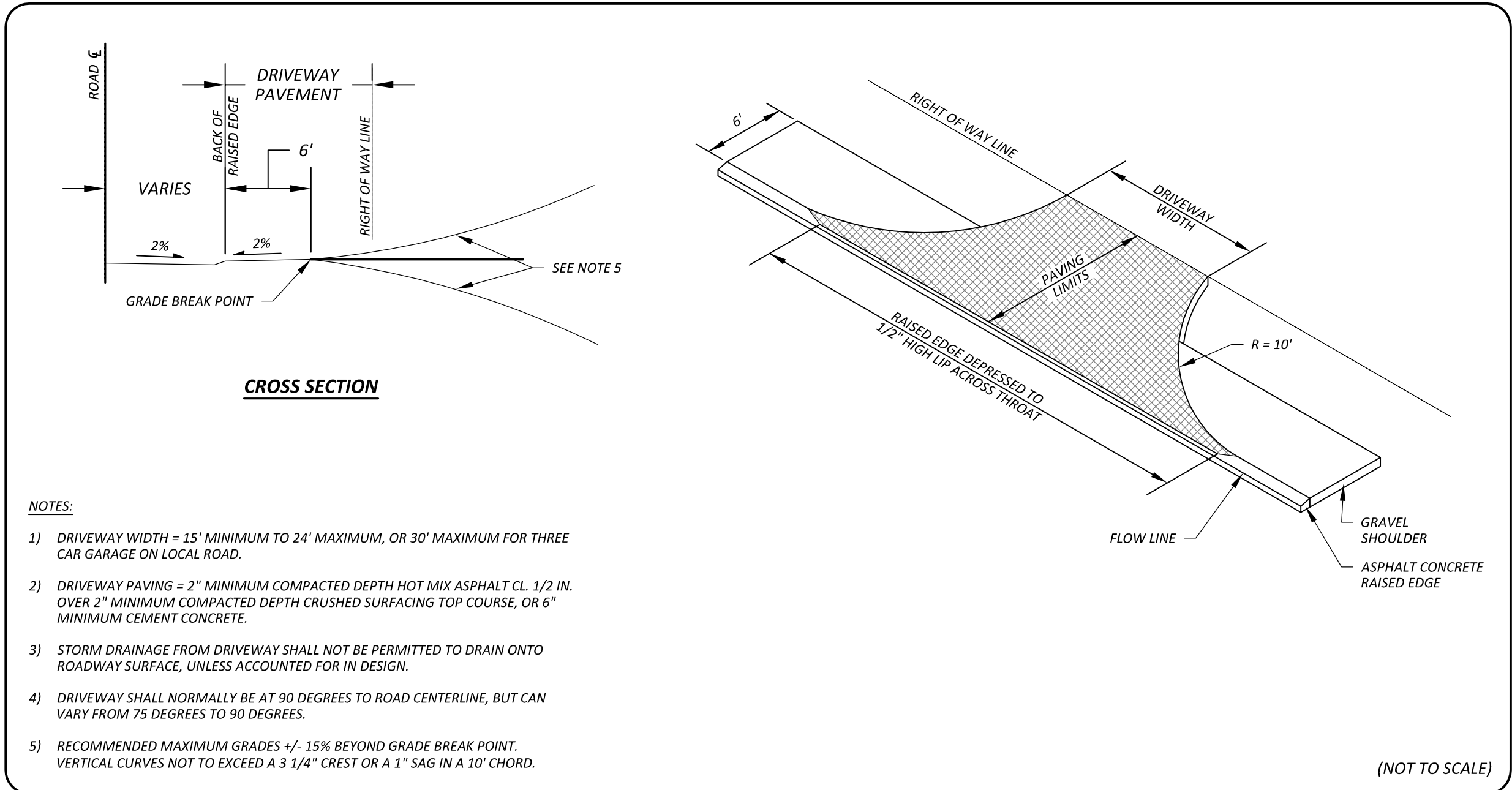
- (SD) CONSTRUCT 12" ADS N-12 STORM DRAIN AT GRADE SHOWN IN PROFILE. MEASUREMENT: LF OF 12" STORM. BID ITEM: INCLUDES ALL EXCAVATION, PIPE, MANPOWER, EQUIPMENT, TOOLS, TRENCH BACKFILL TO PERFORM THE WORK. PAYMENT: PER LF.
- (C1) CONSTRUCT TYPE I CATCH BASIN AT GRADES AND LOCATION SHOWN IN PROFILE. MEASUREMENT: EACH TYPE I CONSTRUCTED. BID ITEM: INCLUDES ALL EXCAVATION, MATERIALS, MANPOWER, EQUIPMENT, TOOLS, BACKFILL, RISERS, GROUT, LIDS, GRATES, TO PERFORM THE WORK AND BRING TO FINISHED GRADE. PAYMENT: PER EA.
- (C2) CONSTRUCT TYPE II CATCH BASIN AT GRADES AND LOCATION SHOWN IN PROFILE. MEASUREMENT: EACH TYPE II CONSTRUCTED. BID ITEM: INCLUDES ALL EXCAVATION, MATERIALS, MANPOWER, EQUIPMENT, TOOLS, BACKFILL, RISERS, GROUT, COVERS, TO PERFORM THE WORK AND BRING TO FINISHED GRADE. PAYMENT: PER EA.
- (SC) SAWCUT EXISTING PAVEMENT TO CREATE A CLEAN EDGE FOR PAVING. MEASUREMENT: LF OF SAWCUTTING COMPLETED. BID ITEM: INCLUDES ALL MANPOWER, EQUIPMENT, TOOLS, TO PERFORM THE WORK. PAYMENT: PER LF.
- (PV) PAVE AS SHOWN IN TYPICAL SECTION AND ON PLANS. MEASUREMENT: PER TON OF AC. BID ITEM: INCLUDES ALL ASPHALT, MANPOWER, EQUIPMENT, TOOLS, TESTING, COMPACTION EQUIPMENT TO PERFORM THE WORK. PAYMENT: PER TON OF AC.
- (BC) CONSTRUCT AC BARRIER CURB OR AC RAISED EDGE AS SHOWN IN DETAIL. MEASUREMENT PER LF OF CURB. BID ITEM: INCLUDES ALL ASPHALT, MANPOWER, EQUIPMENT, TOOLS, TO PERFORM THE WORK. PAYMENT: PER LF OF AC BARRIER OR RAISED EDGE CURB.
- (DW) CONSTRUCT DRIVEWAY APPROACH AS PER STANDARD DETAIL. MEASUREMENT: PER EACH DRIVEWAY APPROACH CONSTRUCTED. BID ITEM: INCLUDES ALL ASPHALT, MANPOWER, EQUIPMENT, TOOLS NEEDED TO PERFORM THE WORK. PAYMENT: PER EACH DRIVEWAY APPROACH CONSTRUCTED.
- (FL) CONSTRUCT ASPHALT FLUME FOR CATCH BASIN BUP OUT, TO CONTROL DRAINAGE ON STEEP GRADE. MEASUREMENT AND PAYMENT WILL BE INCIDENTAL TO TONNAGE OF ASPHALT AND LINEAL FEET OF CURB.
- (RG) RE-GRADE EXISTING DITCH OR DRESS UP EXISTING SHOULDER. MEASUREMENT: PER SQUARE YARD OF DITCH OR SHOULDER GRADED. BID ITEM: INCLUDES ALL MATERIALS, EQUIPMENT, EXCAVATION, AGGREGATE, MULCH, SEEDING, TOOLS, MANPOWER TO PERFORM THE WORK. PAYMENT: PER SQUARE YARD, MEASURED IN THE FILED, OF DITCH OR SHOULDER RESTORATION.
- (TP) TRENCH PATCH AS AS PER STANDARD DETAIL. MEASUREMENT: INCIDENTAL TO TONNAGE OF ASPHALT.
- (RE) REMOVE AND DISPOSE OF EXISTING STORM PIPE AND/OR STRUCTURE. MEASUREMENT AND PAYMENT WILL BE INCIDENTAL TO LINEAL FEET OF STORM DRAIN.
- (CS) CONNECT TO EXISTING DRAINAGE STRUCTURE. MEASUREMENT: WILL BE PER EACH CONNECTION MADE. BID ITEM: INCLUDES ALL MATERIALS, MANPOWER, EQUIPMENT, GROUT, TOOLS TO MAKE THE CONNECTION. PAYMENT: PER EACH CONNECTION.
- (OL) 1-1/2" OVERLAY OVER EXISTING ROAD AS SHOWN. MEASUREMENT: WILL BE PER TON OF AC. BID ITEM INCLUDES: ALL MATERIALS, TESTING, MANPOWER, EQUIPMENT, TOOLS TO LAY AND COMPACT TO WSDOT SPECIFICATIONS. PERMENT: PER TON.



TYPICAL SECTION  
N.T.S.



53rd and 132nd DRAINAGE



RESIDENTIAL DRIVEWAY  
APPROACH,  
ASPHALT CONCRETE  
RAISED EDGE  
AND SHOULDER

PC.F2.1

GENERAL NOTES:

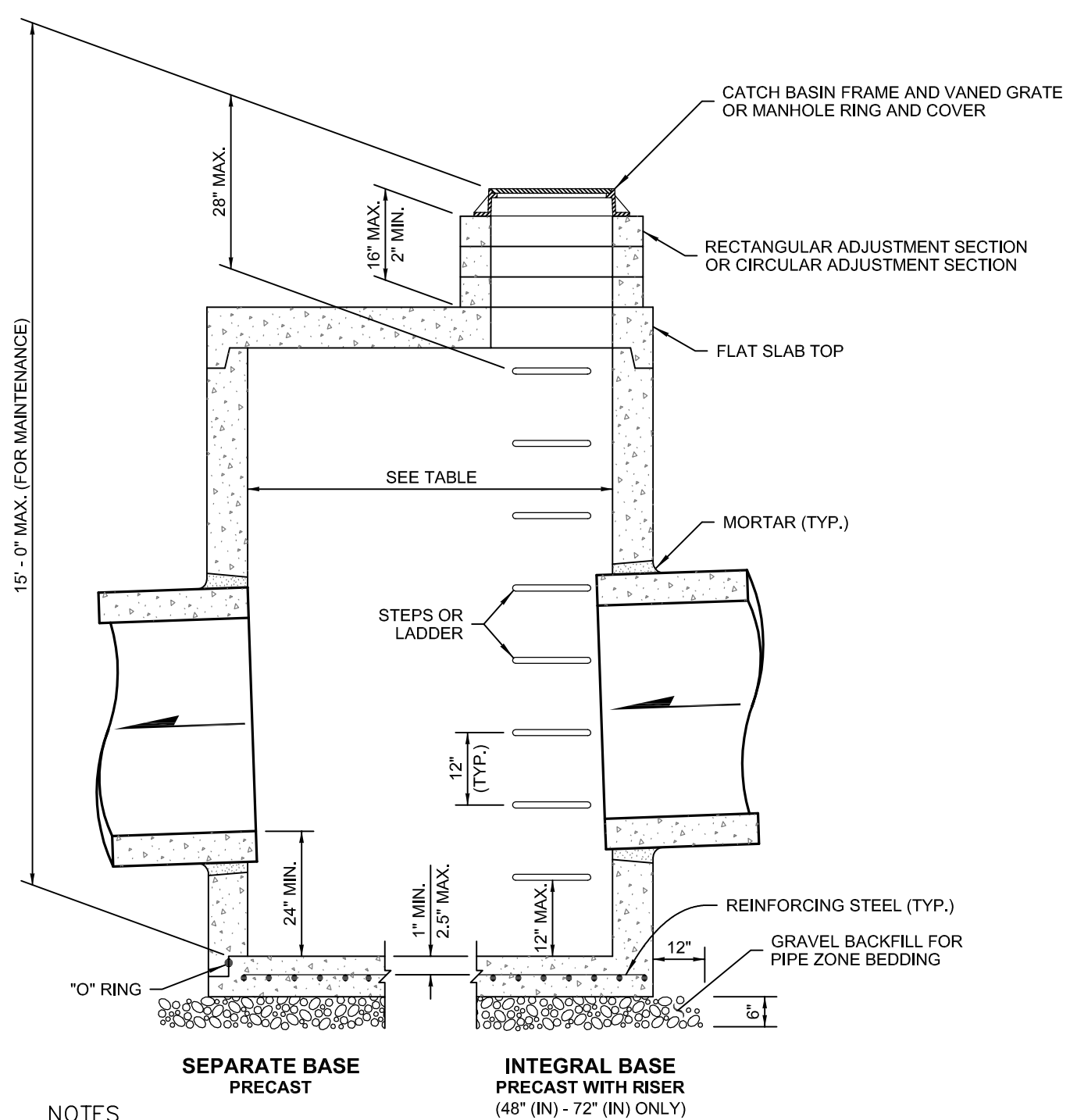
1. ALL MATERIALS AND WORKMANSHIP SHALL BE FURNISHED AND SUPPLIED IN ACCORDANCE WITH THE 2018 WASHINGTON STATE DEPARTMENT OF TRANSPORTATION STANDARD SPECIFICATIONS FOR ROAD, BRIDGE, AND MUNICIPAL CONSTRUCTION AND THESE CONTRACT DOCUMENTS UNLESS OTHERWISE SPECIFICALLY NOTED.

2. THE CONTRACTOR SHALL HAVE A COPY OF THESE PLANS, ANY ADDENDA, CHANGE ORDERS, AND THE CONTRACT SPECIFICATIONS ON THE JOB SITE WHENEVER CONSTRUCTION IS IN PROGRESS.

3. THE CONTRACTOR SHALL PROMPTLY NOTIFY THE ENGINEER IN THE EVENT OR DISCOVERY OF UNSUITABLE SOILS OR HIGH GROUND WATER CONDITIONS OR DISCREPANCIES FROM THE PLANS.

4. WHENEVER PLANS REFER TO "SAWCUT" OF ASPHALT PAVEMENT OR OIL MAT, OR CONCRETE SURFACE, THE CONTRACTOR SHALL PERFORM A "NEAT LINE CUT" PER SPECIFICATIONS.

5. PROTECTION OF THE ENVIRONMENT: NO CONSTRUCTION RELATED ACTIVITY SHALL CONTRIBUTE TO THE DEGRADATION OF THE ENVIRONMENT, ALLOW MATERIAL TO ENTER SURFACE OR GROUNDWATERS, OR ALLOW PARTICULATE EMISSIONS TO THE ATMOSPHERE, WHICH EXCEED STATE OR FEDERAL STANDARDS. ANY ACTIONS THAT POTENTIALLY ALLOW A DISCHARGE TO STATE WATERS MUST HAVE PRIOR APPROVAL OF THE STATE OF WASHINGTON DEPARTMENT OF ECOLOGY.

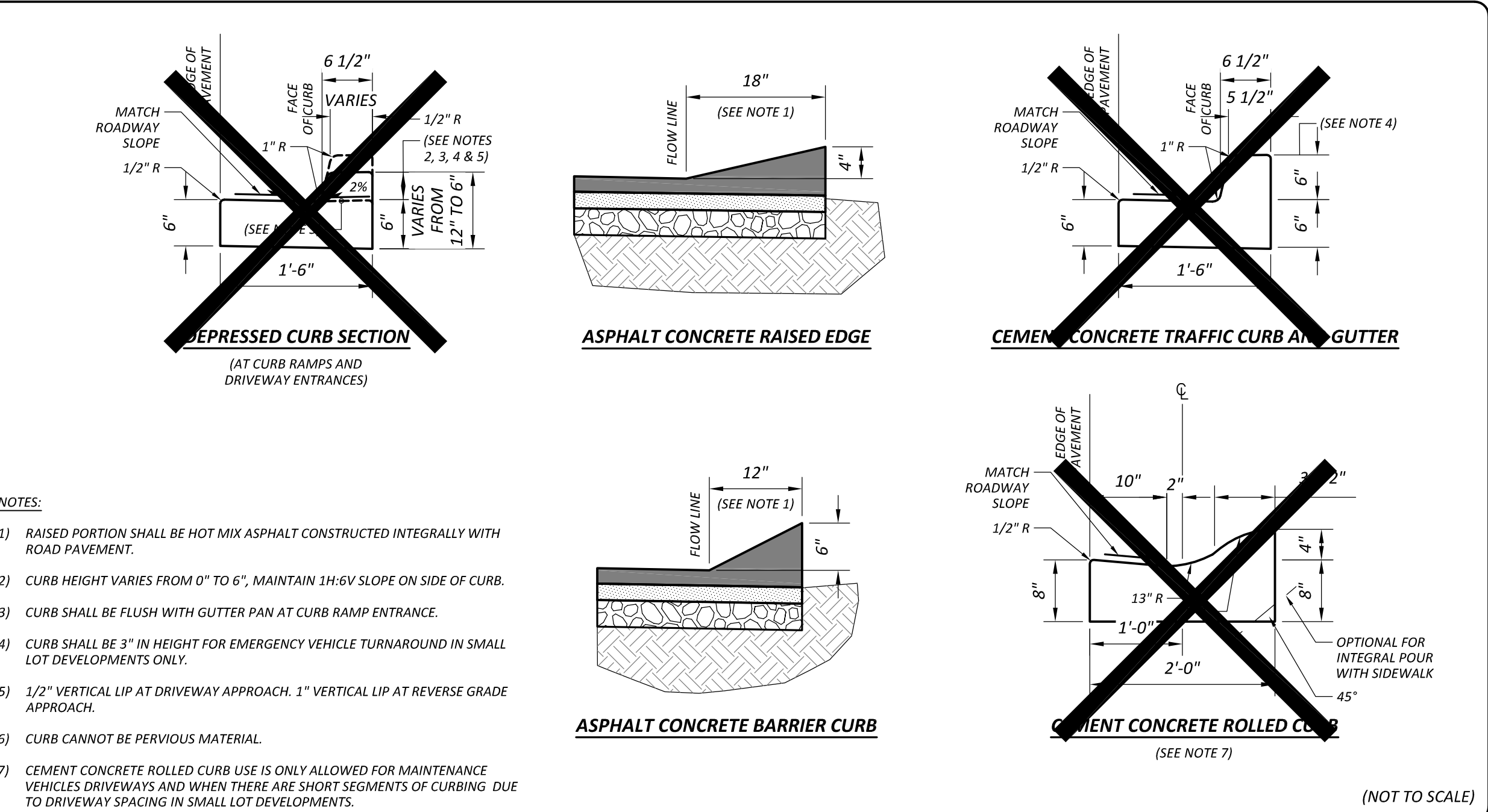


CATCH BASIN DIMENSIONS				
CATCH BASIN DIAMETER	MIN. WALL THICKNESS	MIN. BASE THICKNESS	MAXIMUM KNOCKOUT SIZE	MINIMUM DISTANCE BETWEEN KNOCKOUTS
48"	4"	6"	36"	8"
54"	4.5"	8"	42"	8"
60"	5"	8"	48"	8"
72"	6"	8"	60"	12"
84"	8"	12"	72"	12"
96"	8"	12"	84"	12"
120"	10"	12"	96"	12"
144"	12"	12"	108"	12"

PIPE ALLOWANCES					
CATCH BASIN DIAMETER	PIPE MATERIAL WITH MAXIMUM INSIDE DIAMETER				
	CONCRETE	ALL METAL	CPSSP ① PP ④	SOLID WALL PVC ②	PROFILE WALL PVC ③
48"	24"	30"	24"	30"	30"
54"	30"	36"	30"	36"	36"
60"	36"	42"	36"	42"	42"
72"	42"	54"	42"	48"	48"
84"	54"	60"	54"	48"	48"
96"	60"	72"	60"	48"	48"
120"	66"	84"	60"	48"	48"
144"	78"	96"	60"	48"	48"

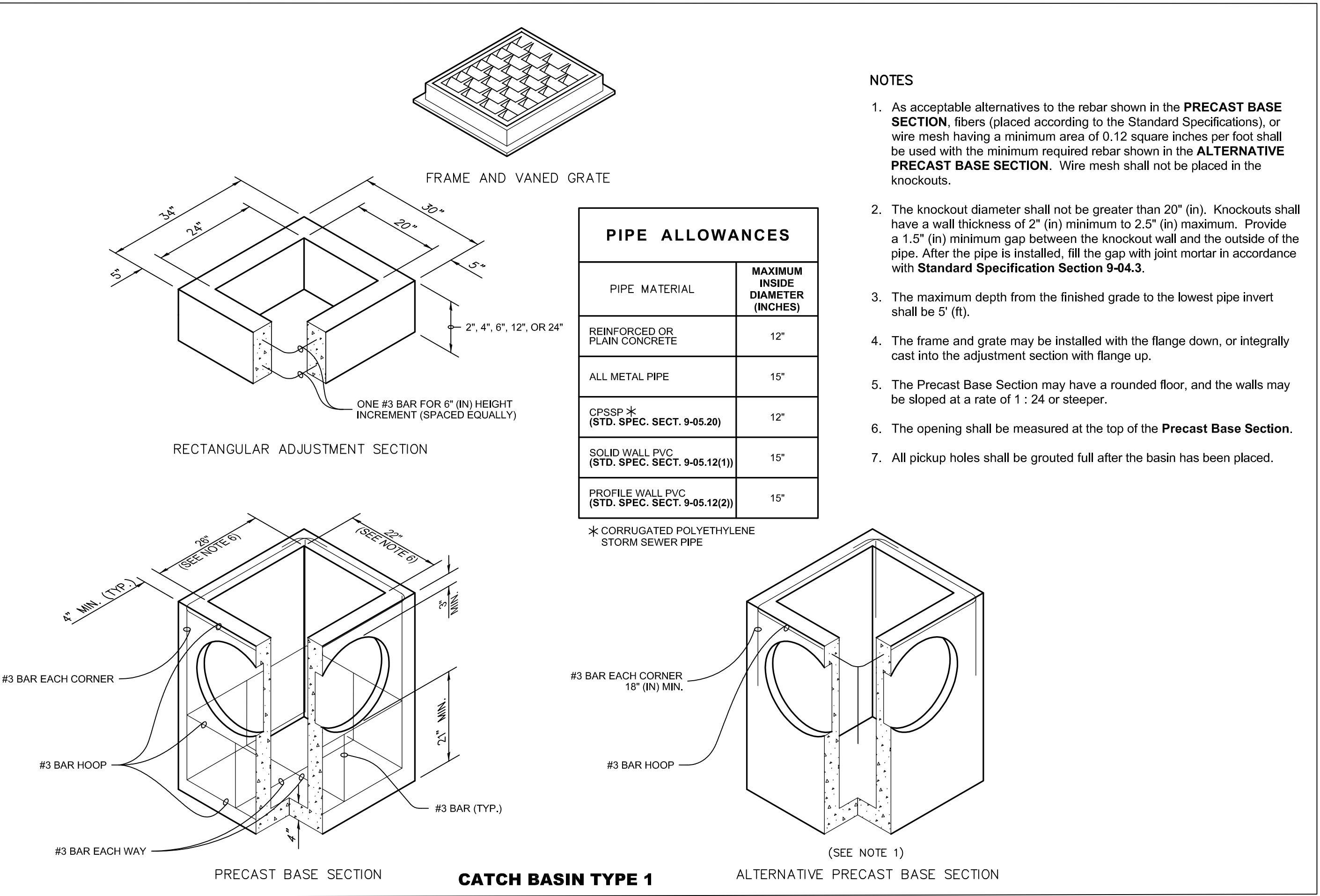
① Corrugated Polyethylene Storm Sewer Pipe (See **Standard Specification Section 9-05.20**)  
② (See **Standard Specification Section 9-05.12(1)**)  
③ (See **Standard Specification Section 9-05.12(2)**)  
④ Polypropylene Pipe (See **Standard Specification Section 9-05.24**)

CATCH BASIN TYPE 2



CURB DETAILS

STANDARD DRAWING PC.F8.1



8/26/2021

CITY OF EDGEWOOD  
2224 104th AVENUE EAST  
EDGEWOOD, WA 98372

PROJECT NO. PWSD 21-100

SHEET 5 OF 5