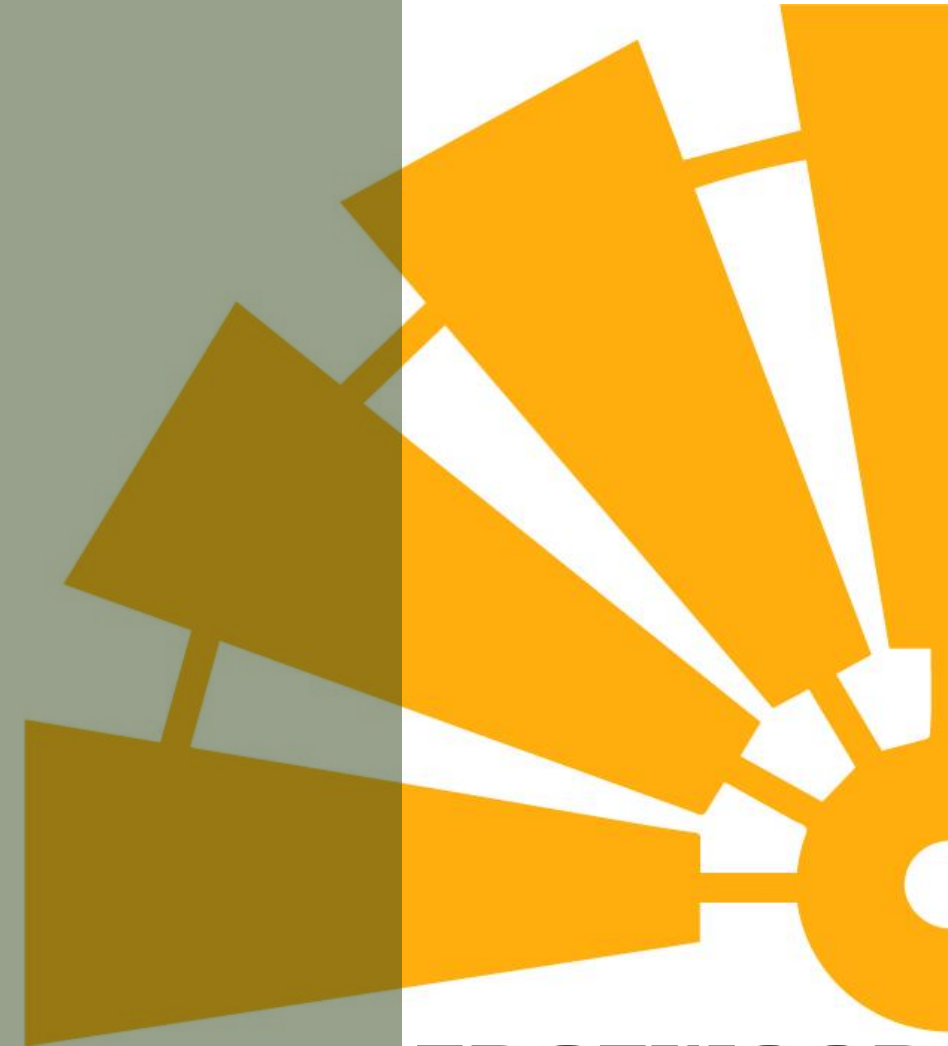


COMPREHENSIVE PLAN PERIODIC UPDATE: KEY POLICIES WORKSHOP

Community and Economic Development Department

October 26, 2023



EDGEWOOD
Washington

PROJECT TEAM



TEAM MEMBERS



**LAUREN
BALISKY**

Community &
Economic
Development Director



**JEREMY
METZLER**

Public Works
Director



EVAN HIETPAS

Senior Planner



**MORGAN
DORNER**

Senior Planner



SILAS READ

Associate Planner



**WAYNE
CARLSON**

Principal



**NICOLE
STICKNEY**

Senior Planning
Project Manager



**ELIZABETH
ESPINOZA**

Planner



EMILY WEIMER

Senior Planner

TONIGHT'S WORKSHOP

- A. Introduction
- B. Vision for Edgewood
- C. Key Policies
 - 1. Housing
 - 2. Active Transportation
 - 3. Environment
 - 4. Utilities
 - 5. Equity & Inclusion



PROGRESS REPORT



- September 21, 2023 Open House
- Community Preferences Survey coming soon!
- Drop-in hours tomorrow with Evan
10am-Noon / 12:30pm-4pm



WA STATE GROWTH MANAGEMENT

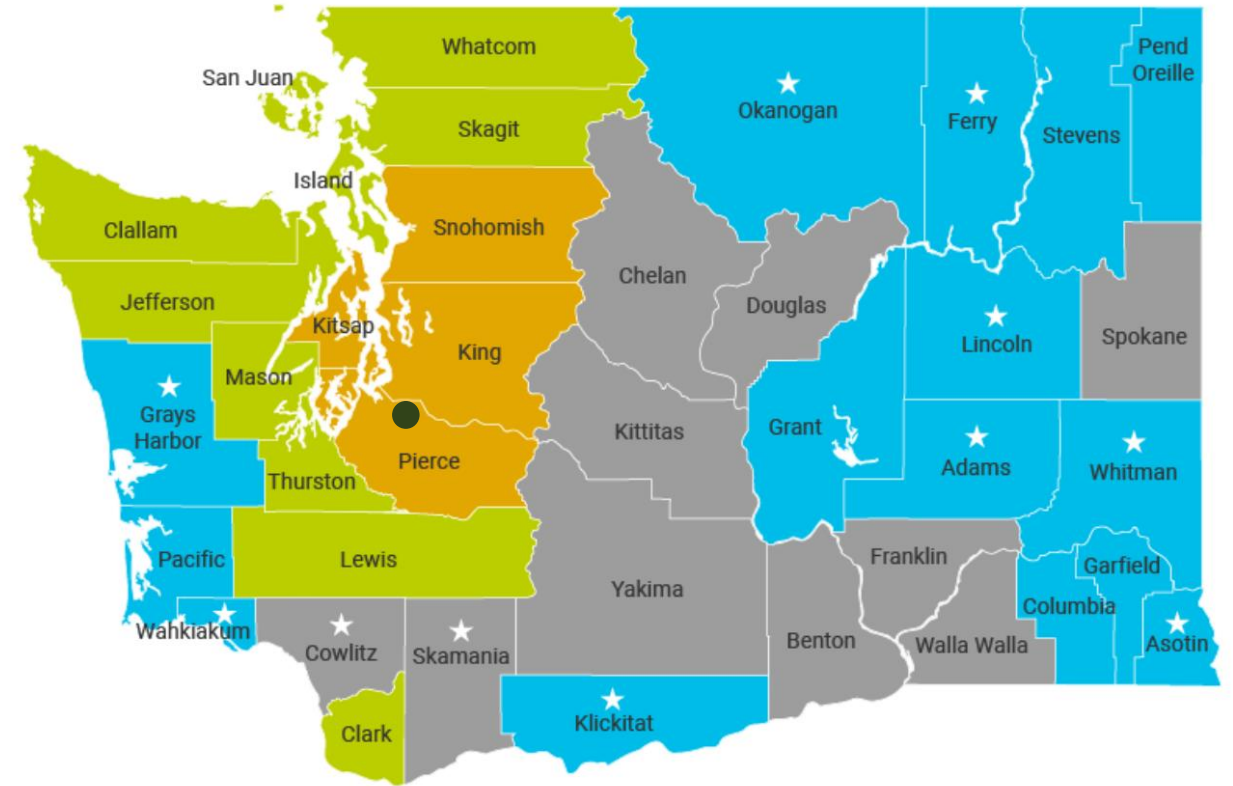


Who plans for growth?

- Qualifying counties and all cities and towns within them (Pierce County included)

How often do updates happen?

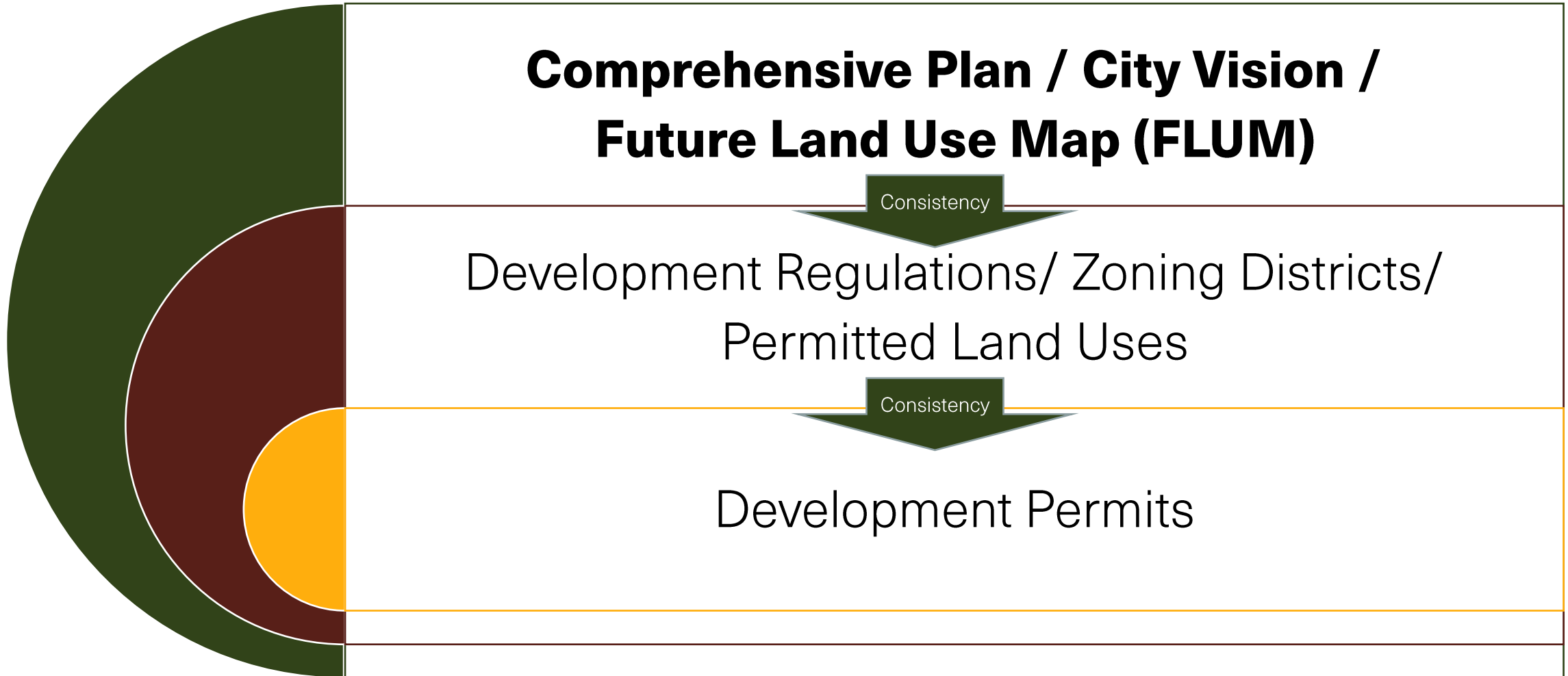
- Last Periodic Update in 2015
- Puget Sound Region due in 2024



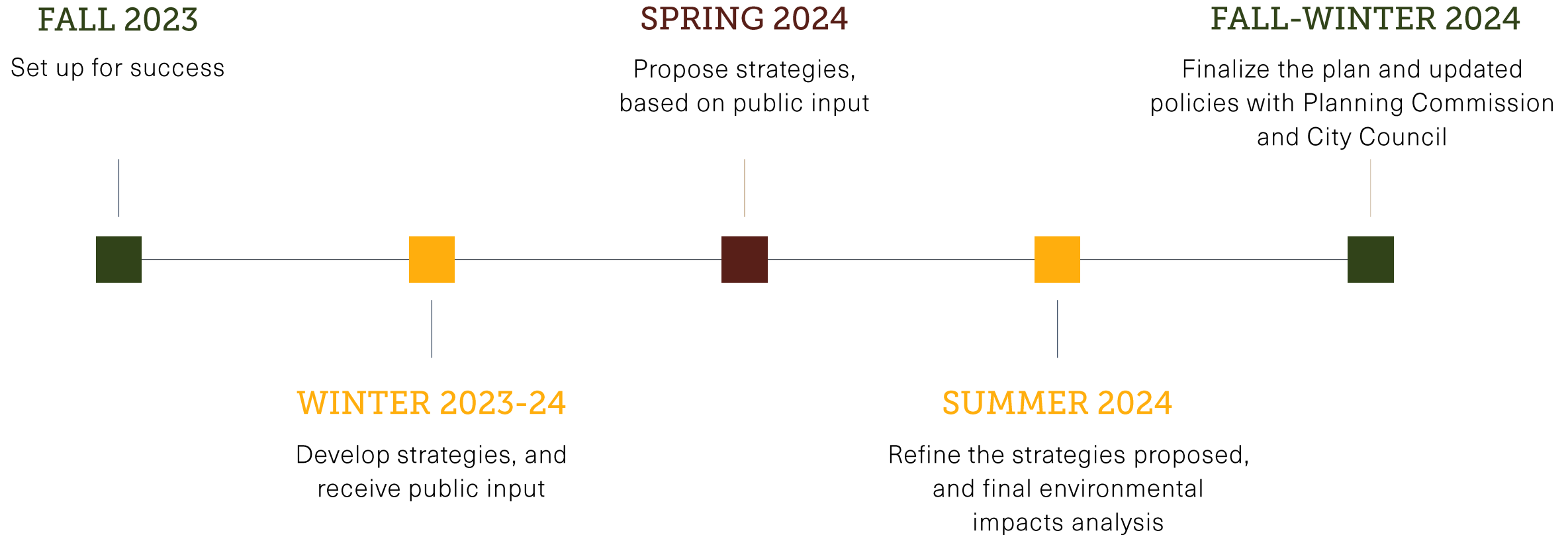
2024 Due December 31st 2025 Due June 30th 2026 Due June 30th 2027 Due June 30th

★ Starred counties are partially planning under the Growth Management Act

EDGEWOOD PLANNING



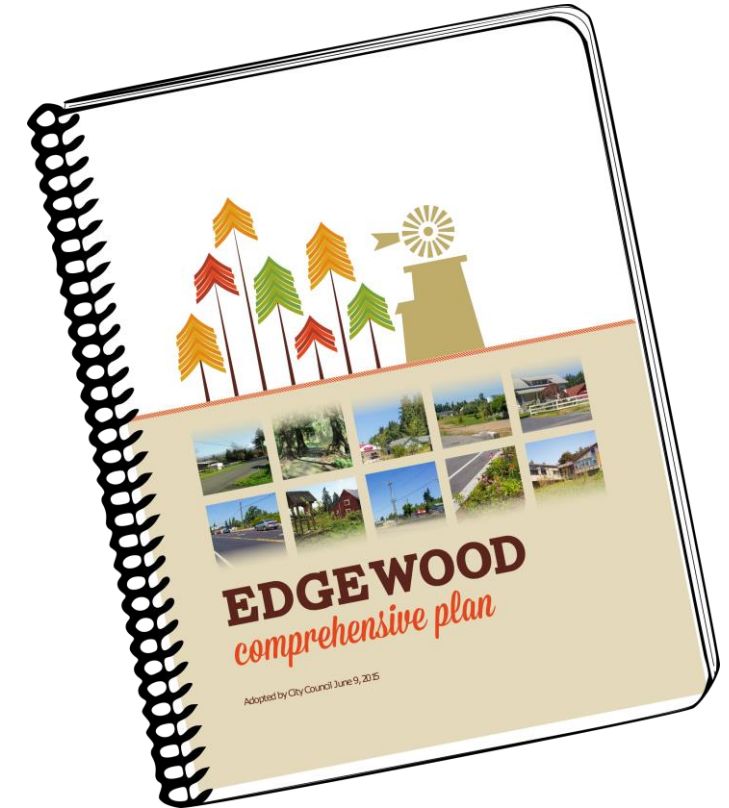
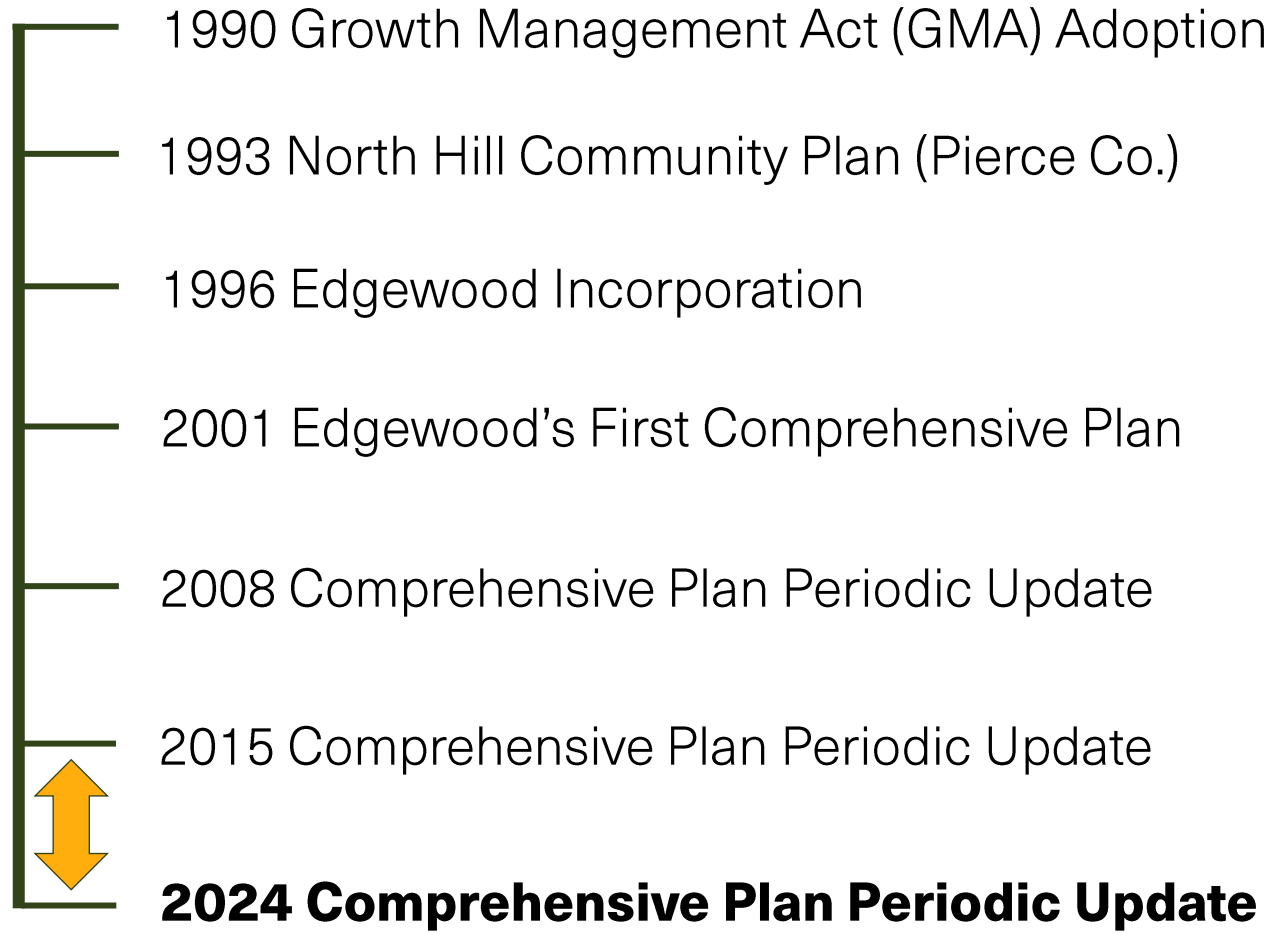
PERIODIC UPDATE TIMELINE



A photograph of two brown horses grazing in a grassy field. In the background, there are trees with vibrant autumn foliage in shades of yellow and orange. A dark green horizontal bar is overlaid on the right side of the image, containing the text "VISION FOR THE FUTURE" in white, bold, sans-serif capital letters. The right edge of the slide features a large, stylized yellow sunburst graphic.

VISION FOR THE FUTURE

EDGEWOOD COMPREHENSIVE PLANNING



CURRENT VISION STATEMENT



"In 2035, we have preserved our rural small town character, family-friendly neighborhoods and our trees and open spaces. Town Center is our commercial hub and home to a vibrant local economy. Pedestrian and bike paths connect people and places throughout our community. We are fiscally sustainable, providing high quality public services within our financial capacity. Similarly, we strive to be environmentally sustainable, living within the capacity of our natural systems. We are a community of active citizens who are engaged in the decisions that shape our future and make Edgewood a unique and special place."

CONSIDERATIONS FOR CHANGE



In 2035, we have preserved our rural small town character, family-friendly neighborhoods and our trees and open spaces.

Town Center is our commercial hub and home to a vibrant local economy.

Pedestrian and bike paths connect people and places throughout our community.

CONSIDERATIONS FOR CHANGE



We are **fiscally sustainable**, providing high quality public services within our financial capacity.

Similarly, we strive to be environmentally sustainable, **living within the capacity** of our natural systems.

We are a community of active **citizens** who are engaged in the decisions that shape our future and make Edgewood a unique and special place.

What do you think?

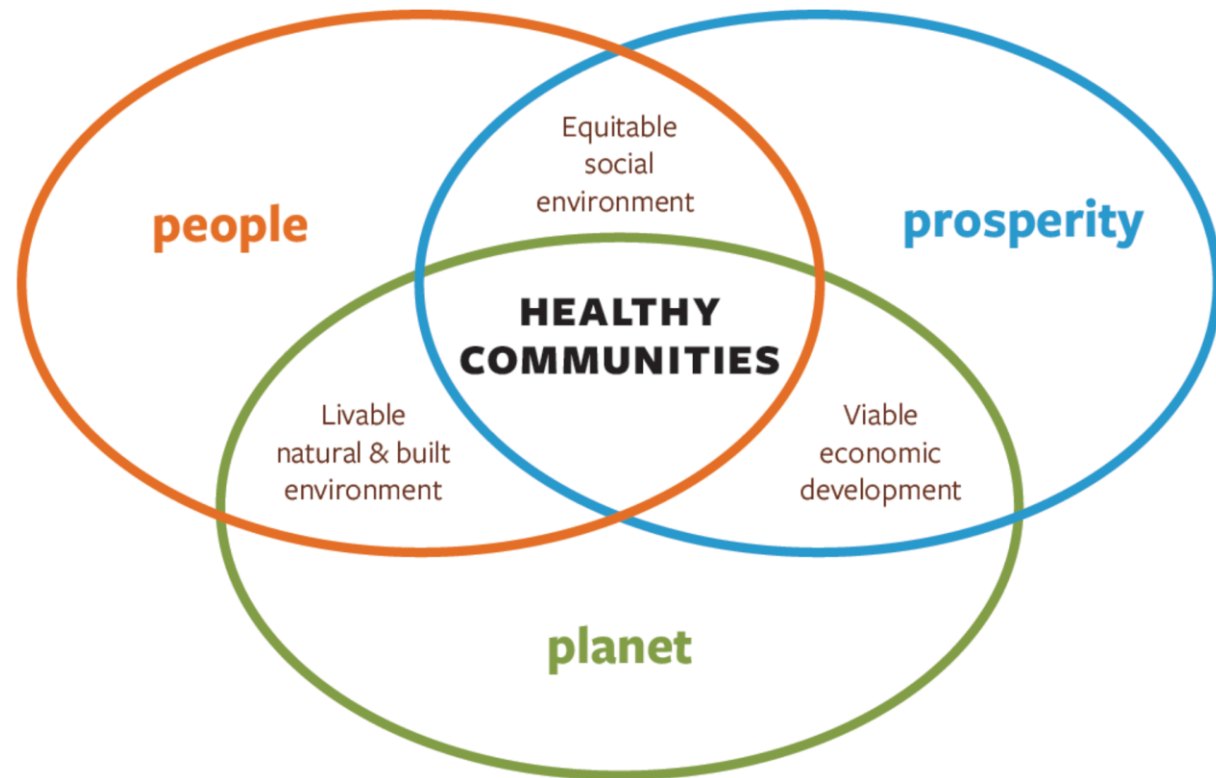
- What should Edgewood consider about its past?
- What do you love about Edgewood already?
- What do you think Edgewood is missing?
- What do you think the City should focus on when developing into the future?

HEALTHY COMMUNITY PLANNING



Figure 2 Healthy Communities Diagram

Edgewood has considered health as an integral part of the plan update and policies to promote healthy living.





KEY POLICIES

KEY POLICY AREAS



1. Housing

2. Active Transportation and Recreation

3. Natural Environment

4. Utilities and Public Services

5. Equity and Inclusion





1. HOUSING

PLANNING FRAMEWORK



State: (WA State Growth Management Act)

- **Plan for and accommodate** housing affordable to all economic segments of the population of this state
- Promote a **variety** of residential densities and housing types
- Encourage **preservation** of existing housing stock

PLANNING FRAMEWORK



Region: (Puget Sound Regional Council)

- Preserve, improve, and expand housing stock to provide a range of affordable, **accessible, healthy, and safe housing** choices to every resident.
- Promote **fair and equal access** to housing for all people.

PLANNING FRAMEWORK



County: (Countywide Planning Policies)

- Plan to meet affordable and moderate-income housing needs goal by utilizing a range of strategies
- Preservation of existing housing
- Production of new, affordable and moderate-income housing that is safe and healthy

EDGEWOOD - HOUSING



Existing Comprehensive Plan Goal

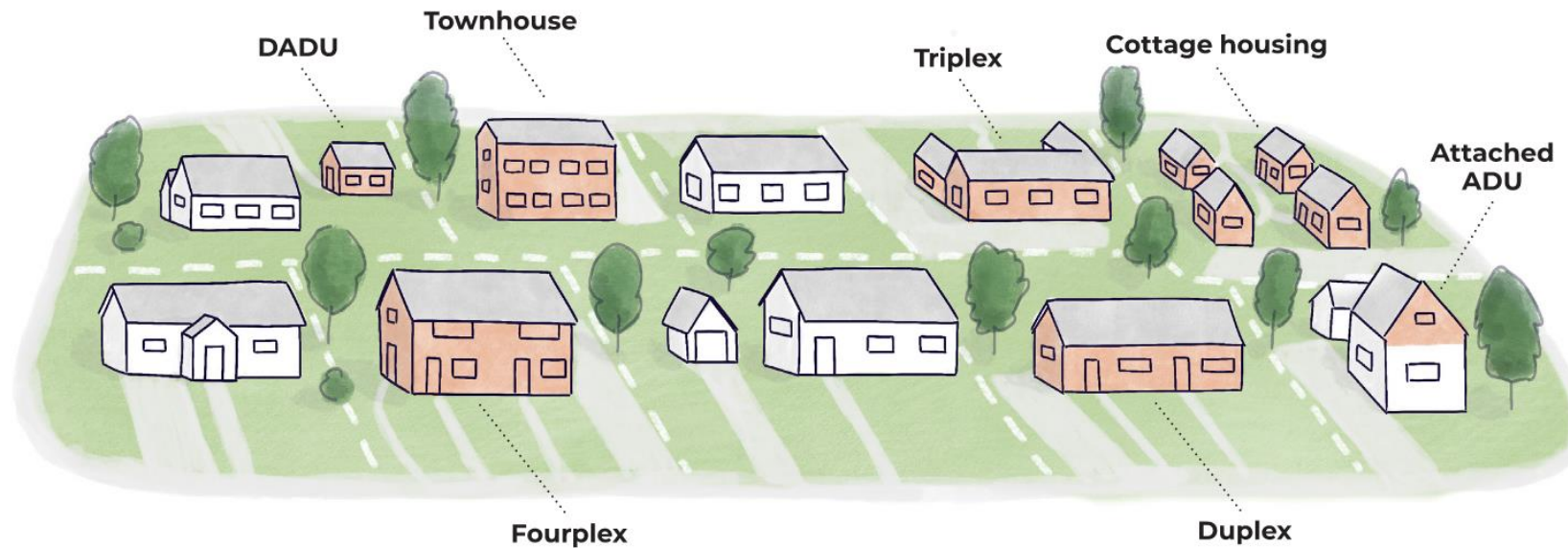
- Promote a mix of housing types to meet the needs of current and future residents.

Growth and Housing Targets

	2020 Baseline	2020-2044 Growth	2044 Target
Population	12,327	5,931	18,258
Housing	5,125	2,432	7,557

EDGEWOOD - HOUSING

- “Missing Middle” Housing
- Racially Disparate Impacts and Displacement



QUESTIONS, THOUGHTS, INPUT



- What types of housing would you like to see more of?
- Is it affordable to live here?
- What experiences have you had?





2. ACTIVE TRANSPORTATION AND RECREATION

PLANNING FRAMEWORK



State:

- Encourage efficient **multimodal transportation systems** that will reduce greenhouse gas emissions... vehicle miles traveled...



PLANNING FRAMEWORK



Region:

- **Improve local street patterns** – including their design and how they are used – for walking, bicycling, and transit use to enhance communities, connectivity, and physical activity.
- Promote and incorporate bicycle and pedestrian travel as important modes of transportation by **providing facilities and navigable connections.**

PLANNING FRAMEWORK



County:

- Promote and develop policies and comprehensive transportation system options that **support health and well-being**, such as improving the design of local street patterns to support walking, bicycling, and transit use, **placemaking**, connectivity, physical activity, health and well-being.

EDGEWOOD – ACTIVE TRANSPORTATION

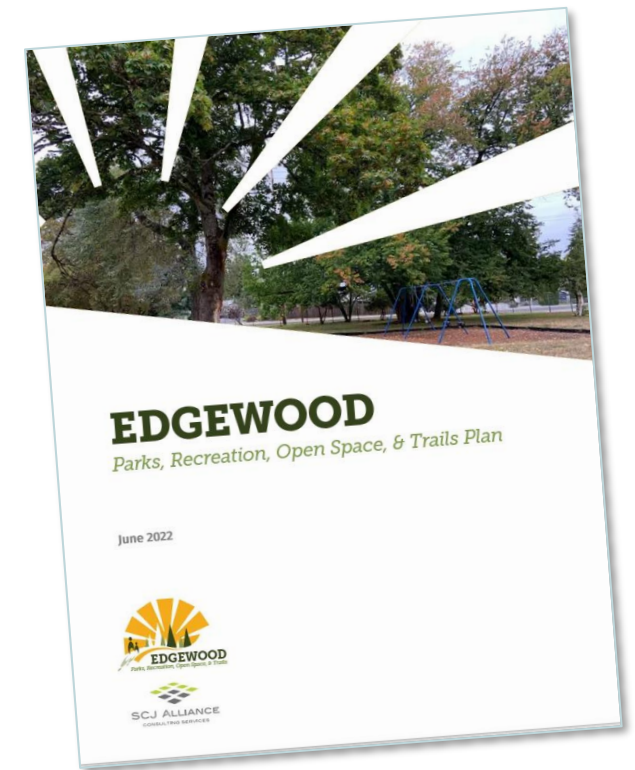


Existing Comprehensive Plan Goal

- Establish a land use pattern that supports physical activity, including biking and walking.

Parks, Recreation, Open Space, and Trails Plan

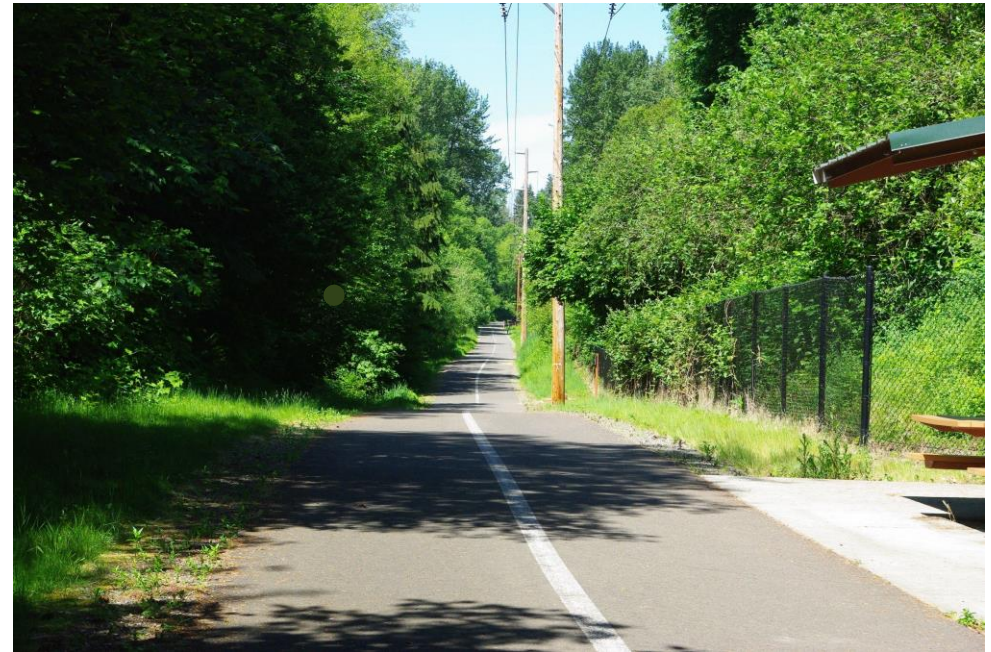
- Updated in 2022



QUESTIONS, THOUGHTS, INPUT



- What types of infrastructure would you like to see?
- Do your kids walk to school?
- Do you walk to the store?
- Do you feel safe and normal walking around your neighborhood?



An aerial photograph of a suburban neighborhood. In the foreground, there is a large, dense forest of tall evergreen trees. To the left, a residential development with many houses is visible. In the background, a large body of water, likely a lake or bay, stretches across the horizon under a blue sky with scattered clouds. The text "3. NATURAL ENVIRONMENT AND OPEN SPACE" is overlaid in white, bold, sans-serif font on a dark green rectangular background in the center-right of the image.

3. NATURAL ENVIRONMENT AND OPEN SPACE

PLANNING FRAMEWORK



State:

- **Protect and enhance** the environment and enhance the state's high quality of life, including air and water quality, and the availability of water.



PLANNING FRAMEWORK



Region:

- The region cares for the natural environment by **protecting and restoring natural systems**, conserving habitat, improving water quality, and reducing air pollutants.
- The **health of all residents** and the economy is connected to the health of the environment. Planning at all levels considers the impacts of land use, development, and transportation on the ecosystem.

PLANNING FRAMEWORK



County:

- Protect the environment and enhance the state's high quality of life, including air and water quality, and the availability of water.
- **Coordinate watershed planning and land use planning** activities and implementation activities within a watershed boundary.
- Maintain or enhance water quality through adoption of **stormwater regulations** to control, runoff and best management practices to maintain natural aquatic communities and beneficial uses.

EDGEWOOD – ENVIRONMENT



Existing Comprehensive Plan Goal

- Promote development that respects and preserves the natural environment.



EDGEWOOD – ENVIRONMENT



State Environmental Policy Act (SEPA)

- Assess all potential environmental impacts
- Coordinate with other agencies

Critical Areas Regulations

- Wetlands
- Flood Hazards
- Fish and Wildlife Habitat
- Other



QUESTIONS, THOUGHTS, INPUT



- What environmental issues are you passionate about?
- Any issues that you experience in Edgewood?
- What areas do you want to see preserved?
- Are there specific concepts that should be included in our survey?
- What does “open space” mean to you?



4. UTILITIES AND PUBLIC SERVICES

EDGEWOOD WA

PLANNING FRAMEWORK



State:

- Encourage development in urban areas where **adequate public facilities and services** exist or can be provided in an efficient manner.
- Ensure that those public facilities and services necessary to support development shall be **adequate to serve the development at the time the development is available for occupancy and use** without decreasing current service levels below locally established minimum standards.

PLANNING FRAMEWORK



Region:

- The region supports development with adequate public facilities and services in a timely, coordinated, efficient, and cost-effective manner that **supports local and regional growth planning objectives.**
- Obtain urban services from cities or appropriate regional service providers.
- **Serve new development** within the urban growth areas with **sanitary sewer** or fit it with dry sewers in anticipation of connection to the sewer system.

PLANNING FRAMEWORK



County:

- To protect the public health and safety of the citizens... preserve and protect environmental quality ... (and) work towards the goal of **eliminating the development of new residential and commercial uses on on-site and community sewage systems**... each municipality shall adopt: ...
 - Policies which require connection to sanitary sewers when they are available.

EDGEWOOD – UTILITIES



Existing Comprehensive Plan Goal

- Support the provision of quality utility services that are reliable, efficient and financially and environmentally sustainable.

General Sewer Plan Update

- 2007- Current Plan
- 2019- Update Process Began
- 2024- Adopted Consistent with Comprehensive Plan

QUESTIONS, THOUGHTS, INPUT



- What questions or concerns do you have about sewer extension or other utility services?
- Which utilities/ public services needs are being met/satisfactory?
- Which utilities/ public services would you like to see improved?
- Any specific topics to ask in the upcoming survey?



5. EQUITY AND INCLUSION

PLANNING FRAMEWORK



State:

- Encourage the involvement of citizens in the planning process, including the participation of **vulnerable populations and overburdened communities**, and ensure coordination between communities and jurisdictions to reconcile conflicts.

Vision 2050 definition of Historically Marginalized Communities — include, but are not limited to, native and Indigenous peoples, people of color, immigrants and refugees, people with low incomes, those with disabilities and health conditions, and people with limited English proficiency.

PLANNING FRAMEWORK



Region:

- Conduct **inclusive engagement** to identify and address the diverse needs of the region's residents.
- **Reduce disparities in access to opportunity...** through targeted public and private investments that meet the needs of current and future residents and businesses.
- Promote affordability and **equitable access** of public services to all communities, especially the historically underserved.

PLANNING FRAMEWORK



County:

- To enable everyone to enjoy a good quality of life, we need **healthy communities**. These are places where all individuals have access to healthy social, economic, built and natural environments that give everyone the opportunity to live to the fullest, regardless of race and ethnicity, gender, income, age, abilities, or other socially defined circumstances.

EDGEWOOD – EQUITY AND INCLUSION



NEW PROPOSED Comprehensive Plan Goal

- Ensure equity is at the forefront of all planning decisions.

City Council

- 2020 Resolution - “Respecting the Diversity of our Residents”

QUESTIONS, THOUGHTS, INPUT



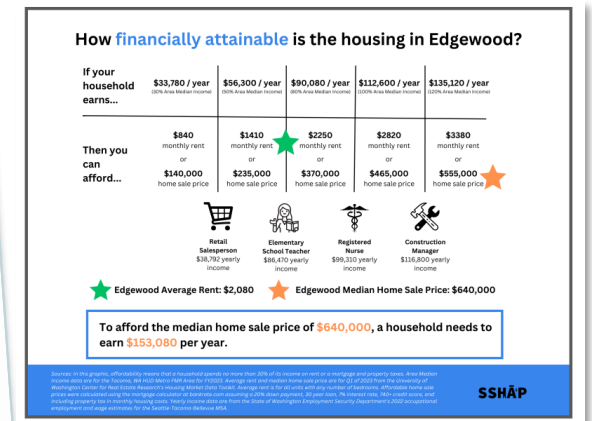
- Any experiences or ideas to share?
- How can this become meaningful?
- Which community groups do we need to talk to?



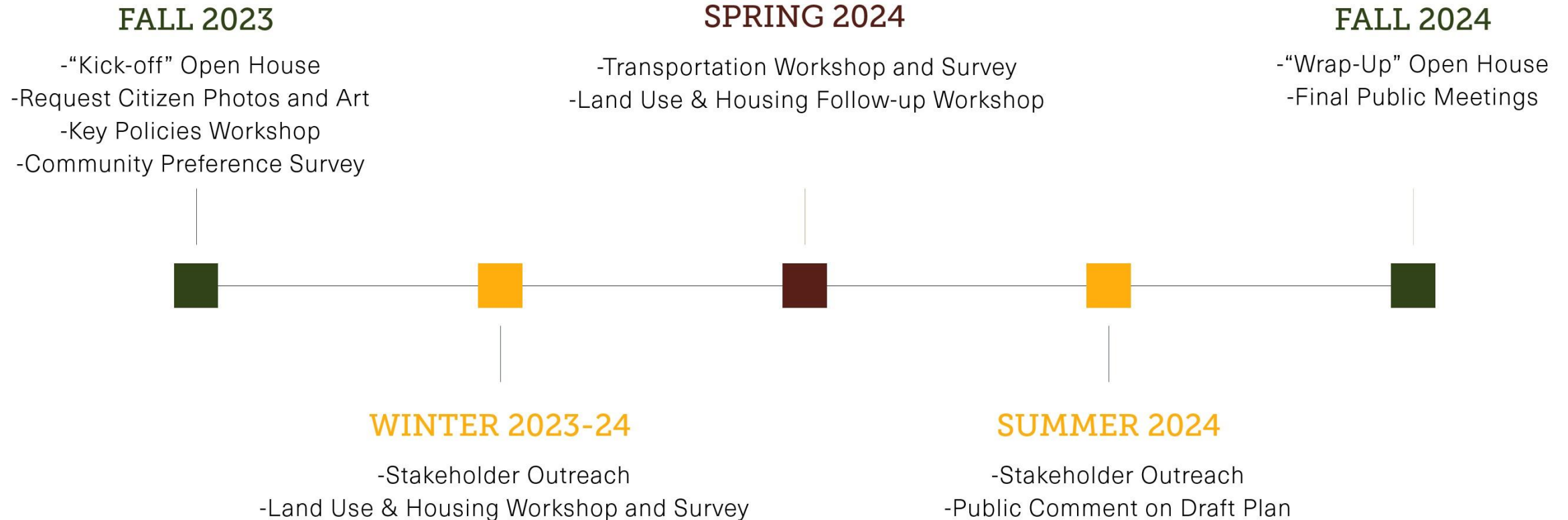


WHAT IS MISSING?

Questions, Ideas, Discussion



PUBLIC PARTICIPATION



STAY CONNECTED



Sign up for our e-mail list to receive project updates and announcements.

Participate in upcoming surveys and workshops.

Share your thoughts and feedback:

comdev@cityofedgewood.org

Monitor our project webpage for materials.

cityofedgewood.org/434

