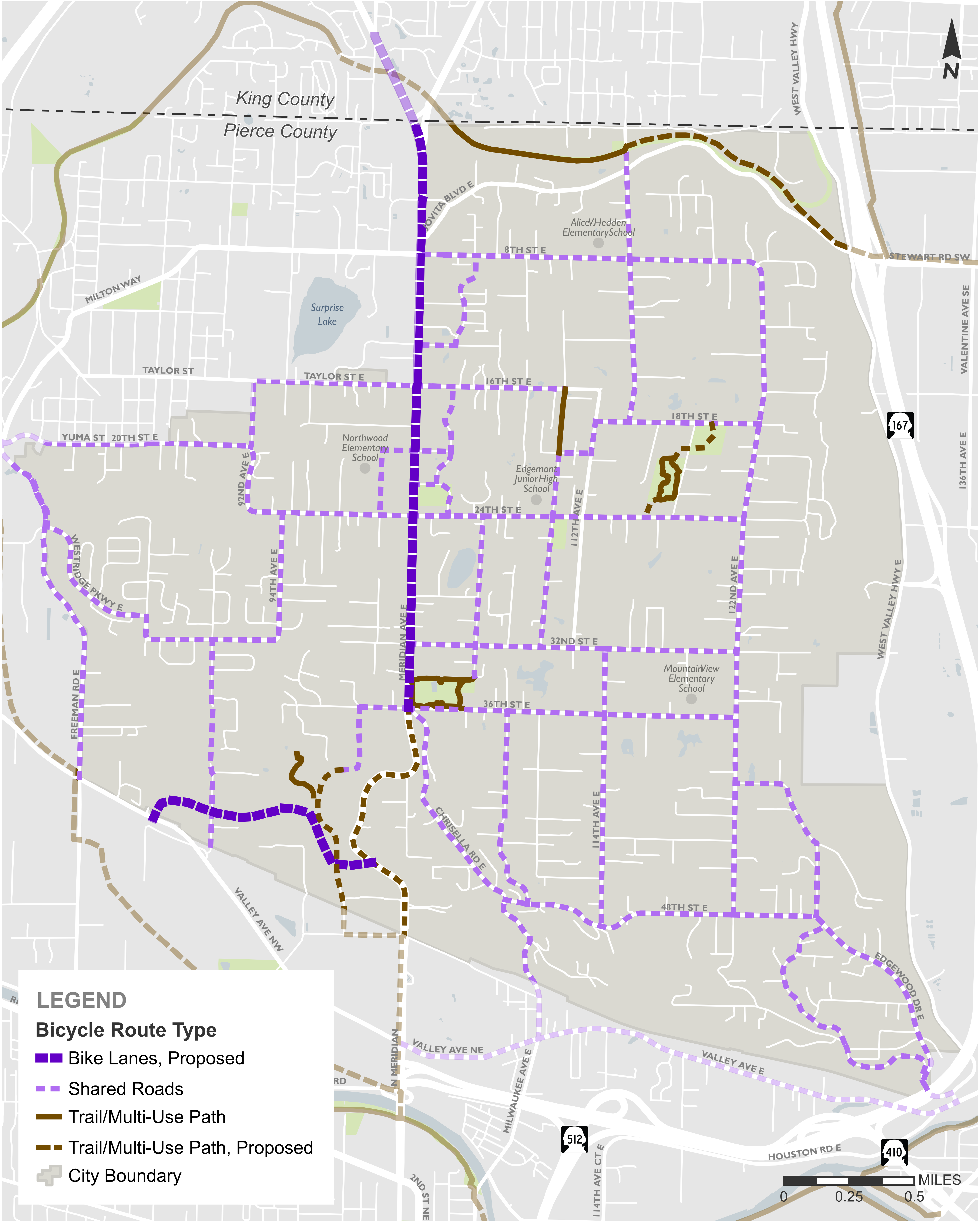
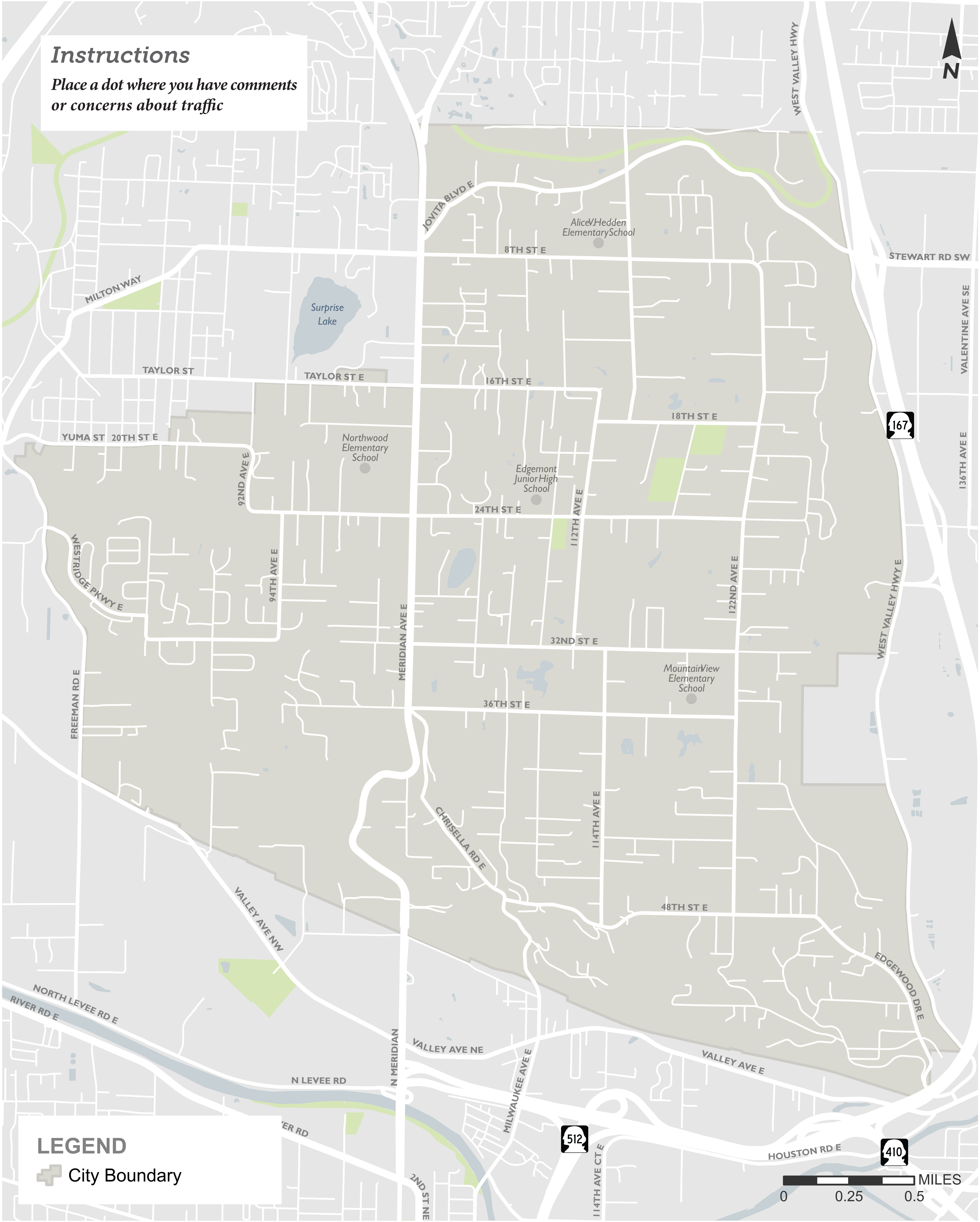


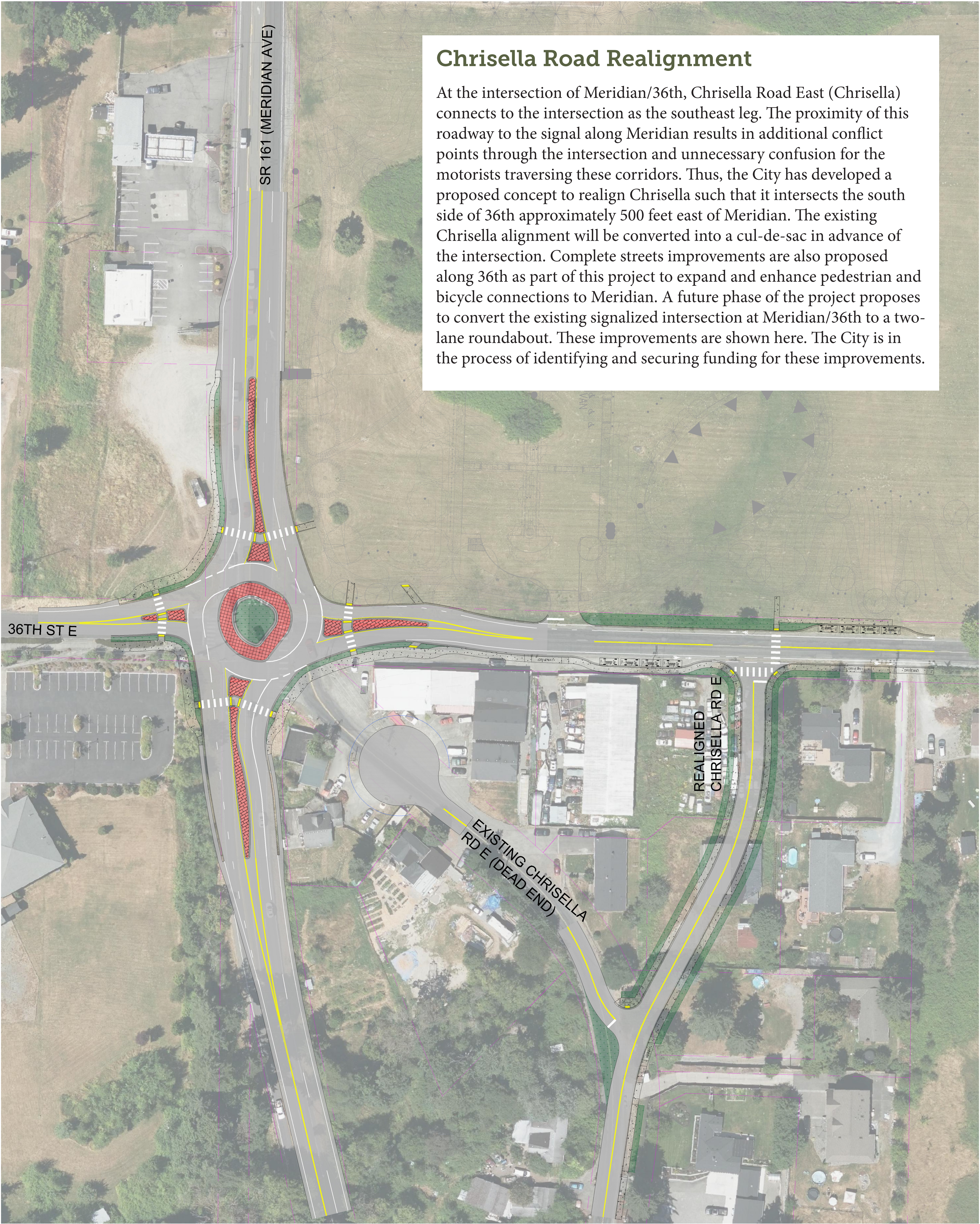
Planned Bicycle Network



Transportation Areas of Interest



Meridian Ave/36th St E Concept



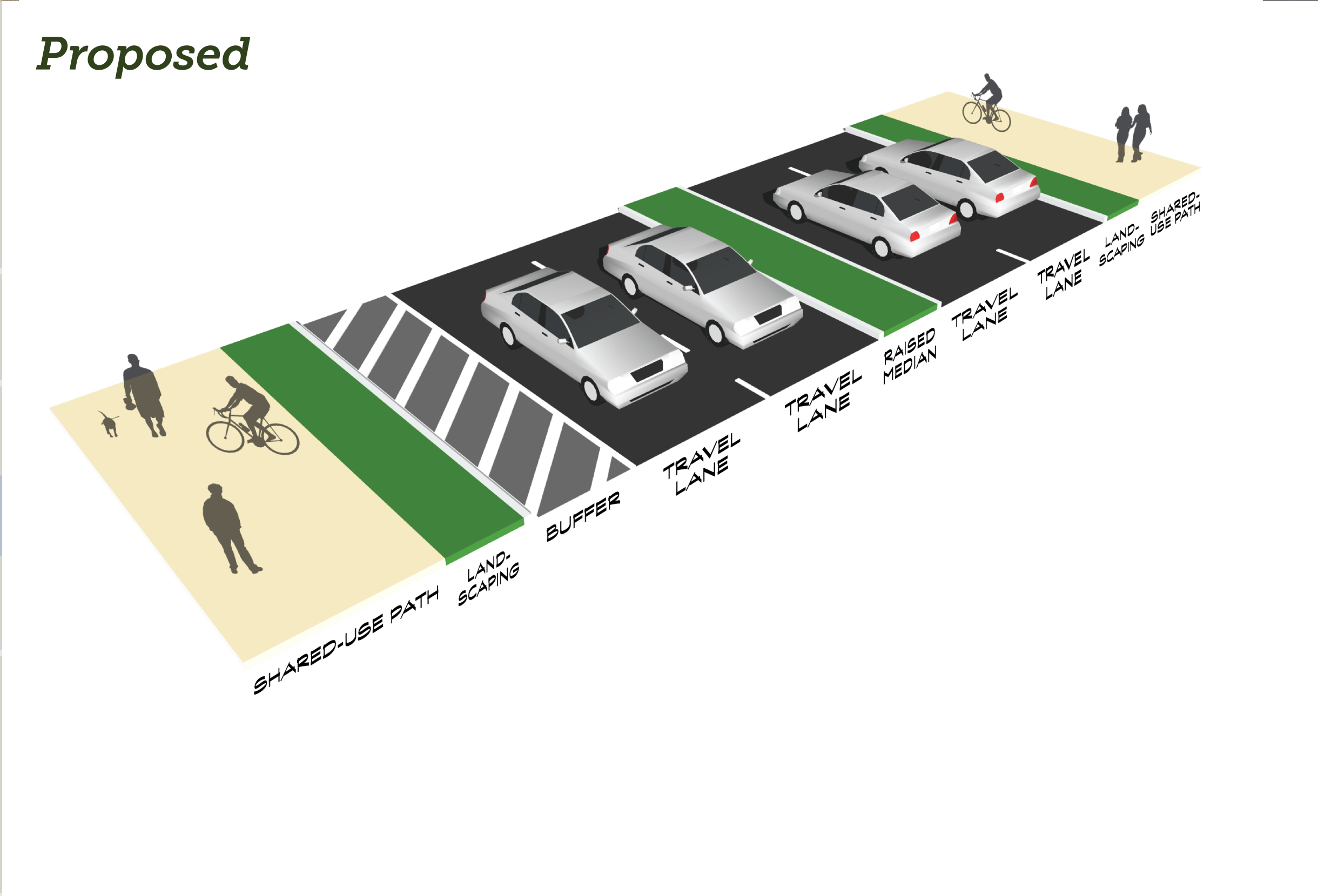
Chrisella Road Realignment

At the intersection of Meridian/36th, Chrisella Road East (Chrisella) connects to the intersection as the southeast leg. The proximity of this roadway to the signal along Meridian results in additional conflict points through the intersection and unnecessary confusion for the motorists traversing these corridors. Thus, the City has developed a proposed concept to realign Chrisella such that it intersects the south side of 36th approximately 500 feet east of Meridian. The existing Chrisella alignment will be converted into a cul-de-sac in advance of the intersection. Complete streets improvements are also proposed along 36th as part of this project to expand and enhance pedestrian and bicycle connections to Meridian. A future phase of the project proposes to convert the existing signalized intersection at Meridian/36th to a two-lane roundabout. These improvements are shown here. The City is in the process of identifying and securing funding for these improvements.

Meridian Avenue Concept



Segment 1



Segment 2

